

AUTUMN FLYER 2022



Be Smart. Be Safe. Be Sure.®



41" x 21" HD Series 15-Drawer Toolbox Combo

What's HOT



- Double-wall 18 gauge steel construction with 14 gauge reinforced bottom channels
- Riveted aluminum mouldings
- Extra-generous 21-1/2" depth

842961 HDCC-4115 | List \$3,361.75

SALE \$2,295.00

3.5 Ton Service Jack plus 4 Ton Vehicle Stands

What's HOT



- Designed for the professional user
- Heavy-duty pump, ram, and cylinders are precision machined and inspected to ensure long service life and superior performance
- Strongarm jack stands provide a safe and secure way to support vehicles when performing under-car maintenance

030420 965D-SP | List \$595.85

SALE \$409.95

2-in-1 Die Grinder Combo

What's HOT



- Contains 1 each: 90° mini die grinder (402009) and 1 straight mini die grinder (402010)
- Ball-bearing construction for maximum tool life and durability
- Lever throttle for positive speed control
- Built in regulator
- Front exhaust

402148 MDGPROMO | List \$187.00

SALE \$89.95

55-PC 1/2" DR SAE/Metric Socket Wrench Set - 6 Point

What's HOT



- CrV steel
- 3/8 - 1-1/4", 10 - 32 mm Standard Length
- 7/16 - 7/8", 10 - 21 mm Deep Length

600341 SW1255C-6 | List \$689.75

SALE \$379.95

26-PC 1/2" DR SAE Impact Socket Set - 6 Point

What's HOT



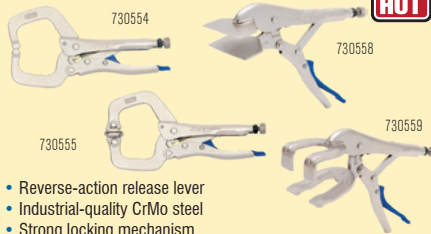
- CrMo steel
- 7/16 - 1-1/4" Standard and Deep Length

610330 PS2612SD | List \$405.20

SALE \$219.95

Locking C-Clamps

What's HOT



- Reverse-action release lever
- Industrial-quality CrMo steel
- Strong locking mechanism

| PROD. NO. | MOD. NO. | Type | List | SALE |
|-----------|----------|-------------------|---------|---------|
| 730554 | J6R | C-Clamp | \$43.05 | \$22.95 |
| 730555 | J6RP | C-Clamp with Pads | \$46.50 | \$24.95 |
| 730556 | J11R | C-Clamp | \$65.45 | \$34.95 |
| 730557 | J11RP | C-Clamp with Pads | \$72.35 | \$38.95 |
| 730558 | J8R | Sheet Metal | \$63.75 | \$33.95 |
| 730559 | J9R | Welders | \$67.15 | \$35.95 |



Check out our special
Around
the Wheel
section
Pages 20-21

TOOLS & EQUIPMENT

Sale pricing in effect until December 31, 2022

Distributed by

1/2" Drive Impact Wrench - Super Heavy Duty

What's HOT

SHD



- Produces 1100 ft-lbs of breakaway torque in reverse
- Twin hammer mechanism reduces vibration and increases durability

400280 IW12SHD | List \$401.85

SALE \$234.95

29-PC JET-KUT® B & G Reduced Shank Drill Bit Set - Premium Quality

What's HOT

- Premium 135° Split Point – black and gold finish
- Professional-grade M2 high-speed steel bits at competitive prices
- Bronze oxide gold lands to reduce friction for cooler cutting and longer bit life



570147 BG29RS | List \$180.10

SALE \$74.95

2.5 Ton Service Jack plus 3 Ton Vehicle Stands

What's HOT

- Combo pack promotion of 2-1/2 Ton Service Jack & 3 Ton Safety Stands for a super low promo price
- Designed for the professional user
- Heavy-duty pump, ram, and cylinders are precision machined and inspected to ensure long service life and superior performance
- Strongarm jack stands provide a safe and secure way to support vehicles when performing under-car maintenance



030416 952B-SP | List \$485.00

SALE \$329.95

POWER-XTREME® T1 Cut-Off Wheel

What's HOT



- Fast, cool, burn-free cutting of steel and stainless steel
- Specially designed technology ensures the longest life and best performance in its class

| PROD. NO. | Size | Grade | List | SALE |
|-----------|-----------------------|-------|--------|--------|
| 501571 | 4-1/2" x 3/64" x 7/8" | A60PX | \$4.40 | \$2.79 |
| 501576 | 5" x 3/64" x 7/8" | A60PX | \$4.80 | \$2.99 |
| 501581 | 6" x 3/64" x 7/8" | A60PX | \$6.00 | \$3.79 |

4-PC 6" Ergonomic Pick and Hook Set

What's HOT



- Nickel Chrome-plated finish for corrosion resistance
- Extra long for maximum reach

859301 JPHS-604 | List \$93.05

SALE \$39.95

6-PC Axial Grip Locking Pliers Set

What's HOT



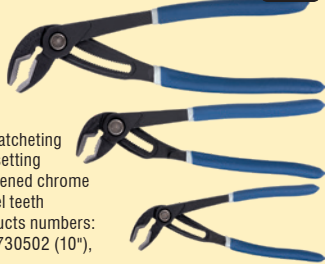
- Extra-slim pliers with straight line-pull design
- Quick-release lever
- Includes one each J, JJ, L, LL, T, and W-jaw pliers
- CrMo steel with nickel plating

730371 JAGP-6 | List \$372.45

SALE \$189.95

3-PC Push Button Ratcheting Pliers Set

What's HOT



- Push-button ratcheting pliers lock in setting
- Specially hardened chrome vanadium steel teeth
- Includes products numbers: 730501 (7"), 730502 (10"), 730503 (12")

730381 JRWP-3S | List \$258.60

SALE \$139.95

1/2" Drive Compact Impact Wrench

What's HOT



- Compact and lightweight design allows for use in confined spaces
- 500 ft-lbs of torque in reverse delivers optimum power and performance
- Weighs only 2.9 lbs

400268 IW12MINI | List \$311.75

SALE \$174.95

300 Lumen Flex Head Rechargeable Work Light

What's HOT



- Combination COB and SMD technology for use as a work light or flashlight
- Head moves 180° and rotates 270°
- Lumens - 300/150

849857 JUFL-300 | List \$77.55

SALE \$49.95

21-PC 3/4" DR SAE Socket Wrench Set - 12 Point

What's HOT



- CrV steel
- 3/4 – 2" Standard Length

600402 SW7521 | List \$905.70

SALE \$499.95

72" x 24" Pro Series 15-Drawer Roller Cabinet

What's HOT



- Double-wall steel construction with reinforced bottom channels
- 1.25" wood work surface
- 100 lb-capacity ball-bearing slides on all drawers
- Extruded aluminum drawer pulls

842531 PRC7215 | List \$4,476.90

SALE \$2,995.00

270° Swivel Head Ratchet Wrenches



- CrV steel handle with CrMo drive gears
- 270° Rotating swivel head
- 72 teeth

| PROD. NO. | MOD. NO. | Drive | Length (Overall) | List | SALE |
|-----------|----------|-------|------------------|----------|----------------|
| 670922 | SH270-14 | 1/4" | 5-7/8" | \$109.35 | \$62.95 |
| 671922 | SH270-38 | 3/8" | 9-1/4" | \$146.50 | \$84.95 |
| 672922 | SH270-12 | 1/2" | 11-7/8" | \$179.30 | \$99.95 |

3-PC Ratchet Wrench Set

PRICE BREAK!



- Contains one each of 1/4, 3/8 and 1/2" RHQ ratchets
- RHQ-3SB oval head set includes bonus MHR-3860 3/8" drive mini head ratchet

690106 RHQ-3SB | List \$268.95

SALE \$149.95

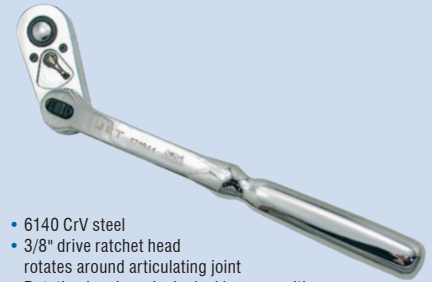
3/4" DR 72-Tooth Ratchet Wrench - Heavy Duty



- 72-teeth require just 5° swing room to engage next tooth
- Ideal for fasteners in restricted areas
- Extra-heavy pawl spring keeps 8 teeth engaged at all times for maximum strength
- Quick-release feature locks accessories to ratchet
- One-piece drop-forged head and handle

| PROD. NO. | MOD. NO. | Drive | Teeth | Length | List | SALE |
|-----------|----------|-------|-------|--------|----------|-----------------|
| 673924 | HT-3472 | 3/4" | 72 | 20" | \$456.95 | \$264.95 |

3/8" DR Articulating Head Ratchet Wrench



- 6140 CrV steel
- 3/8" drive ratchet head rotates around articulating joint
- Rotating head can be locked in any position

671944 HSR-3800 | List \$155.15

SALE \$89.95

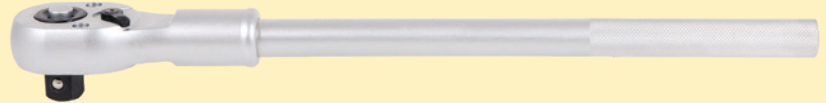
17-PC 3/4" DR SAE Socket Set - 12 Point



- CrV Steel
 - 7/8 - 2" Standard Length
- 601405 SS3417 | List \$742.65**

SALE \$409.95

3/4" DR Oval Head Ratchet Wrench - Heavy Duty



- All components are forged from superior-quality CrV steel
- New increased tooth configurations offer finer ratcheting mechanisms
- Available in regular and extra-long models
- Push-button quick-release feature holds sockets on securely until ready to release
- Convenient reversing switch can be operated with one hand
- Comfortable handle style
- Mirror polish finish
- Repair kits available
- All ratchets are designed for use by professionals
- Meets or exceeds ANSI specifications

| PROD. NO. | MOD. NO. | Drive | Teeth | Length | List | SALE |
|-----------|----------|-------|-------|---------|----------|-----------------|
| 673922 | RHQ-34 | 3/4" | 24 | 19-1/2" | \$358.65 | \$199.95 |

PRICE BREAK!

17-PC 3/4" DR Metric Socket Set - 12 Point



- CrV Steel
 - 19 - 50 mm
- 601406 SS3417M | List \$706.45**

SALE \$389.95

7-PC 3/4" DR Telescoping Tool Set

- All components forged from high-quality Chrome Vanadium steel
- Chamfered edges allow easiest socket placement on fastener, increasing productivity and reducing frustration
- Meets or exceeds U.S. Federal Specs: GGG-W-641E and Canadian Government Specs: CDA39-GP-12b and ANSI specifications
- Standard Accessories:
 - 40-tooth super-duty reversible ratchet (673923)
 - 20 - 32" telescoping drive handle (for use with all items in kit) (673914)
 - 4" extension (673903)
 - 3/4" Female x 1" Male adaptor (673912)
 - Sliding T-handle head (673910)
 - Flex joint head (673911)
 - Blow-mould case

690105 SDK3407 | List \$931.20



SALE \$539.95

42-PC 1/4" DR SAE/Metric Socket Wrench Set - 6 Point



- CrV steel
- 3/16 – 1/2"
- 4 – 12 mm
- Standard and Deep Length

600125 SW1442C-6 | List \$241.35

SALE

\$139.95

21-PC 3/8" DR SAE Socket Wrench Set - 6 Point



- CrV steel
- 3/8 – 3/4" Standard Length
- 3/8 – 13/16" Deep Length

600229 SW3821-6 | List \$258.60

SALE

\$149.95

42-PC 1/4" DR SAE/Metric Socket Wrench Set - 12 Point



- CrV steel
- 3/16 – 1/2"
- 4 – 12 mm
- Standard and Deep Length

600126 SW1442C-12 | List \$241.35

SALE

\$139.95

45-PC 3/8" DR SAE/Metric Socket Wrench Set - 6 Point



- CrV steel
- 3/8 – 3/4", 8 – 19 mm Standard Length
- 3/8 – 13/16", 8 – 19 mm Deep Length

600241 SW3845C-6 | List \$465.55

SALE

\$269.95

30-PC 3/8" DR Metric Socket Wrench Set - 6 Point



- CrV steel
- 8 – 19 mm Standard and Deep Length

600234 SW3830M-6 | List \$293.10

SALE

\$169.95

45-PC 3/8" DR SAE/Metric Socket Wrench Set - 12 Point



- CrV steel
- 3/8 – 3/4", 8 – 19 mm Standard Length
- 3/8 – 13/16", 8 – 19 mm Deep Length

600242 SW3845C-12 | List \$465.55

SALE

\$269.95

21-PC 3/4" DR SAE Socket Wrench Set - 12 Point



- CrV steel
- 3/4 – 2" Standard Length

600406 SW7521-HD | List \$1,050.65

SALE

\$579.95

20-PC 1/2" DR SAE Socket Wrench Set - 6 Point



- CrV steel
- 7/16 – 1-1/4" Standard Length

600323 SW1220-6 | List \$431.05

SALE

\$249.95

55-PC 1/2" DR SAE/Metric Socket Set - 12 Point



- CrV steel
- 3/8 – 1-1/4", 10 – 32 mm Standard Length
- 7/16 – 7/8", 10 – 21 mm Deep Length

600342 SW1255C-12 | List \$689.75

SALE

\$399.95

21-PC 3/4" DR Metric Socket Set - 12 point



- CrV steel
- 19 – 50 mm Standard Length

600407 SW7521M-HD | List \$1,138.15

SALE

\$659.95

29-PC 1/2" DR SAE Socket Wrench Set - 6 Point



- CrV steel
- 3/8 – 1-1/4" Standard Length
- 7/16 – 7/8" Deep Length

600331 SW1229-6 | List \$465.55

SALE

\$269.95

20-PC 1/2" DR SAE Socket Set - 12 Point



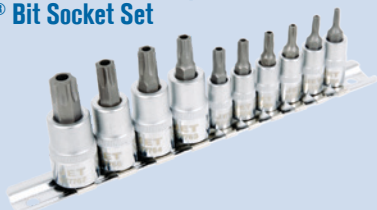
- CrV Steel
- 7/16 – 1-1/4"
- Standard Length

600324 SW1220-12 | List \$431.05

SALE

\$249.95

10-PC 1/4" & 3/8" DR Tamper-Proof TORX® Bit Socket Set



- CrV sockets, S2 steel bits
- 1/4" Drive: T10 – T30
- 3/8" Drive: T40 – T55
- Includes socket rail

601801 SS1438-10TB | List \$98.20

SALE \$56.95

7-PC 3/8" DR SAE or Metric 2" Long Hex Bit Socket Set



- CrV sockets, S2 steel bits
- 1/8 – 3/8", 2" Overall Length
- Includes rail

| PROD. NO. | MOD. NO. | Sizes | List | SALE |
|-----------|----------|------------|---------|----------------|
| 601201 | HSW3811 | 1/8 – 3/8" | \$72.35 | \$41.95 |
| 601202 | HSW3811M | 3 – 10 mm | \$72.35 | \$41.95 |

8-PC 1/2" DR SAE Hex Bit Impact Socket Set



- SNCM 8660 tool steel
- 1/4 – 3/4"

610331 PHB-1208 | List \$212.05

SALE \$122.95

10-PC 3/8" & 1/2" DR SAE or Metric Hex Bit Socket Set



- CrV sockets, S2 steel bits
- Includes socket rail

| PROD. NO. | MOD. NO. | Sizes | List | SALE |
|-----------|-------------|--|----------|----------------|
| 601802 | HSW3812-10 | 3/8" DR: 1/8 – 3/8" 1/2" DR: 1/2 – 5/8" | \$108.55 | \$62.95 |
| 601803 | HSW3812-10M | 3/8" DR: 3 – 10 mm 1/2" DR: 12 – 16 mm | \$108.55 | \$62.95 |

10-PC 1/2" DR TORX® Bit Impact Socket Set



- SNCM 8660 tool steel
- T25 – T80

610326 PTB-1210 | List \$241.35

SALE \$139.95

8-PC 1/2" DR Metric Hex Bit Impact Socket Set



- SNCM 8660 tool steel
- 6 – 19 mm

610333 PHB-1208M | List \$212.05

SALE \$122.95

11-PC 1/4" & 3/8" DR Non-Tamper-Proof TORX® Bit Socket Set



- CrV sockets, S2 steel bits
- 3/8" DR: T40, T45, T47, T50, T55
- 1/4" DR: T10, T15, T20, T25, T27, T30

601806 SS1438-11T | List \$101.65

SALE \$58.95

9-PC 1/2" DR SAE or Metric Ball Nose Hex Impact Socket Set



- CrMo Steel

| PROD. NO. | MOD. NO. | Sizes | List | SALE |
|-----------|----------|-------------|----------|-----------------|
| 610332 | BNH912 | 1/2 – 9/16" | \$212.05 | \$122.95 |
| 610336 | BNH912M | 6 – 19 mm | \$212.05 | \$122.95 |

16-PC 1/2" DR SAE/Metric Hex Bit Impact Socket Set



- SNCM 8660 tool steel
- 1/4 – 3/4"
- 6 – 19 mm

610340 PHB-1216C | List \$382.80

SALE \$221.95

14-PC 1/4 & 3/8" DR SAE/Metric Hex Bit Socket Set



- CrV sockets, S2 steel bits
- 1/4" DR: 1/8 – 3/16", 4 – 6 mm
- 3/8" DR: 7/32 – 3/8", 7 – 10 mm

601808 LHSW-143814C | List \$203.40

SALE \$117.95

5-PC 3/4" DR SAE Impact Hex Bit Socket Set



- SNCM 8660 tool steel
- 3" Length: 5/8 – 1-1/4"

610411 PHB-3405 | List \$341.40

SALE \$197.95

5-PC 3/4" DR Metric Impact Hex Bit Socket Set



- SNCM 8660 tool steel
- 3" Length: 17 – 27 mm

610421 PHB-3405M | List \$341.40

SALE \$197.95

12-PC 3/8" DR SAE Impact Socket Set - 6 Point



- CrMo Steel
- 5/16 – 1"
- Blow-mould case

610207 PS1238 | List \$148.25

SALE \$85.95

12-PC 3/8" DR Deep SAE Impact Socket Set - 6 Point



- CrMo Steel
- 5/16 – 1"
- Blow-mould case

610208 PS1238D | List \$250.00

SALE \$144.95

13-PC 1/2" DR Deep SAE Impact Socket Set - 6 Point



- CrMo Steel
- 7/16 – 1-1/4"

610323 PS1312D | List \$282.75

SALE \$163.95

27-PC 1/2" DR Deep SAE/Metric Impact Socket Set - 6 Point



- CrMo Steel
- 7/16 – 1-1/4"
- 10 – 24 mm
- 5" extension and universal joint

610327 PS2712DC | List \$681.15

SALE \$394.95

19-PC 1/2" DR SAE Impact Socket Set - 6 Point



- CrMo Steel
- 3/8 – 1-1/2"

610328 PS1912 | List \$324.15

SALE \$187.95

19-PC 1/2" DR Deep SAE Impact Socket Set - 6 Point



- CrMo Steel
- 3/8 – 1-1/2"

610329 PS1912D | List \$465.55

SALE \$269.95

22-PC 1/2" DR Metric Impact Socket Set - 6 Point



- CrMo Steel
- 10 – 32 mm

610338 PS2212M | List \$327.60

SALE \$189.95

22-PC 1/2" DR Deep Metric Impact Socket Set - 6 Point



- CrMo Steel
- 10 – 32 mm

610339 PSS2212DM | List \$534.55

SALE \$309.95

16-PC 3/4" DR SAE Impact Socket Set - 6 Point



- CrMo Steel
- 19 – 50 mm Standard Length
- Blow-mould case with removable lid

610403 PS1634 | List \$810.50

SALE \$469.95

17-PC 3/4" DR Deep Metric Impact Socket Set - 6 Point



- CrMo Steel
- 19 – 50 mm Deep Length
- Blow-mould case with removable lid

610408 PS1734DM | List \$1,014.00

SALE \$587.95

12-PC 1" DR SAE Impact Socket Set - 6 Point



- CrMo Steel
- 2-1/8 – 3-1/2" Standard Length

610506 PS1201 | List \$2,500.65

SALE \$1,449.95

16-PC 1" DR Deep SAE Impact Socket Set - 6 Point



- CrMo Steel
- 7/8 – 2" Deep Length

610508 PS1601D | List \$1,702.10

SALE \$986.95

11-PC SAE Raised Panel Combination Wrench Set



- CrV Steel
- 3/8 – 1"
- Terylene pouch

700115 CWS-11S | List \$220.65

SALE \$127.95

16-PC SAE Raised Panel Combination Wrench Set

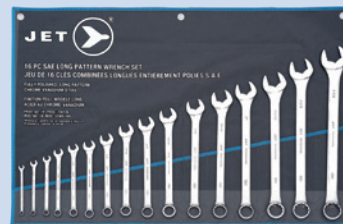


- CrV Steel
- 1/4 – 1-1/4"
- Terylene pouch

700121 CWS-16S | List \$344.85

SALE \$199.95

16-PC SAE Long Pattern Wrench Set



- CrV Steel
- 1/4 – 1-1/4"
- Terylene Pouch

700135 LCWS-16S | List \$534.55

SALE \$309.95

16-PC Metric Raised Panel Combination Wrench Set



- CrV Steel
- 7 – 24 mm
- Terylene pouch

700173 CWS-16M | List \$241.35

SALE \$139.95

22-PC Metric Raised Panel Combination Wrench Set



- CrV Steel
- 7 – 32 mm
- Terylene pouch

700177 CWS-22M | List \$391.40

SALE \$226.95

16-PC Long Metric Fully Polished Combination Wrench Set



- CrV Steel
- 7 – 24 mm
- Terylene pouch

700185 LCWS-16M | List \$362.10

SALE \$209.95

10-PC SAE Jumbo Raised Panel Combination Wrench Set



- S45C Alloy Steel
- 1-5/16 – 2"

700128 JCW-10-2 | List \$1,207.15

SALE \$699.95

10-PC SAE Stubby Wrench Set



- CrV Steel
- 3/8 – 15/16"
- Terylene pouch

700142 SCWS-10S | List \$222.40

SALE \$128.95

10-PC Metric Stubby Wrench Set



- CrV Steel
- 10 – 19 mm
- Includes terylene pouch

700192 SCWS-10M | List \$175.85

SALE \$99.95

8-PC Long SAE Reversible Ratcheting Combination Wrench Set



- CrV Steel
- 5/16 – 3/4"
- Plastic rack

700321 RCWS-8SR | List \$317.25

SALE \$183.95

13-PC Long SAE Ratcheting Combination Wrench Set



- CrV Steel
- 1/4 – 1"
- Plastic rack

700312 RCWS-13S | List \$534.55

SALE \$309.95

12-PC Metric Ratcheting Combination Wrench Set



- CrV Steel
- 8 – 19 mm
- Plastic rack

700361 RCWS-12M | List \$336.20

SALE \$194.95

Slim Head Torque Wrenches - Heavy Duty



- Patented lock button in the handle
- Reversible ratchet

| PROD. NO. | MOD. NO. | Drive | Length | Torque Range | List | SALE |
|-----------|-----------|-------|--------|-------------------------------|----------|-----------------|
| 718906 | JMTW-3800 | 3/8" | 16" | 10 – 80 ft-lbs (10 – 110 Nm) | \$396.60 | \$229.95 |
| 719069 | JMTW-5250 | 1/2" | 24" | 30 – 250 ft-lbs (30 – 340 Nm) | \$500.05 | \$289.95 |

Torque Wrenches



- CrV steel
- 24 teeth

| PROD. NO. | MOD. NO. | Drive | Length | Torque Range | List | SALE |
|-----------|-----------|-------|---------|-------------------------------|----------|-----------------|
| 718902 | JTW-1425 | 1/4" | 13-3/4" | 40 – 250 in-lbs (6 – 30 Nm) | \$275.85 | \$159.95 |
| 718908 | JTW-3880 | 3/8" | 15-1/4" | 15 – 80 ft-lbs (19 – 110 Nm) | \$310.35 | \$179.95 |
| 718911 | JTW-12150 | 1/2" | 21" | 30 – 150 ft-lbs (40 – 210 Nm) | \$362.10 | \$209.95 |
| 718912 | JTW-12250 | 1/2" | 25-1/2" | 50 – 250 ft-lbs (70 – 350 Nm) | \$448.30 | \$259.95 |

Industrial Series Torque Wrenches



- All-metal construction
- Torques left or right
- Quick-release ratchet head

| PROD. NO. | MOD. NO. | Drive | Length | Torque Range | List | SALE |
|-----------|------------|-------|---------|-----------------------------------|------------|-----------------|
| 718971 | JITW-14250 | 1/4" | 9-3/4" | 50 – 250 in-lbs (6.8 – 27.1 Nm) | \$327.60 | \$189.95 |
| 718973 | JITW-38100 | 3/8" | 17" | 20 – 100 ft-lbs (33.9 – 128.8 Nm) | \$384.50 | \$222.95 |
| 718976 | JITW-12250 | 1/2" | 24" | 50 – 250 ft-lbs (75 – 332 Nm) | \$431.05 | \$249.95 |
| 718977 | JITW-34600 | 3/4" | 48-7/8" | 150 – 600 ft-lbs (237 – 779 Nm) | \$1,500.35 | \$869.95 |

Torque Wrenches - Super Heavy Duty



- Magnified view window shows torque value in numbers only - no scale lines to read!
- Lifetime tested to 3 x ISO standards



| PROD. NO. | MOD. NO. | Drive | Length | Torque Range | List | SALE |
|-----------|------------|-------|---------|-------------------------------|----------|-----------------|
| 718956 | JSHD-3875 | 3/8" | 15-3/4" | 15 – 75 ft-lbs (19 – 100 Nm) | \$474.20 | \$274.95 |
| 718961 | JSHD-12150 | 1/2" | 20-3/8" | 30 – 150 ft-lbs (40 – 210 Nm) | \$477.65 | \$276.95 |
| 718962 | JSHD-12250 | 1/2" | 24-1/2" | 50 – 250 ft-lbs (75 – 332 Nm) | \$620.80 | \$359.95 |

1/2" or 3/4" DR Torque Multiplier Kits - Heavy Duty



- Used to multiply applied force for setting and removing high torque fasteners
- Can be driven with a torque wrench
- Kit includes straight and 90° reaction bars



| PROD. NO. | MOD. NO. | Torque Ratio | List | SALE |
|-----------|-----------|--------------|------------|-------------------|
| 719071 | JTM-50750 | 3.3:1 | \$1,270.95 | \$699.95 |
| 719072 | JTM-51100 | 6.5:1 | \$2,124.65 | \$1,169.95 |
| 719074 | JTM-51850 | 12:1 | \$2,655.85 | \$1,469.95 |
| 719075 | JTM-71850 | 3.3:1 | \$2,086.70 | \$1,169.95 |

1/4" DR 50 in-lbs Torque Screwdriver



- Can be used with 1/4" hex bits or 1/4" drive sockets
- 10 – 50 in-lbs
- 6" Length

718991 JTSD-1450K | List \$310.35

SALE \$179.95

5-PC Mechanic's Pliers Set



- CrV steel (except slip joint)
- Cutting blades and teeth induction-hardened to HRC 58-62
- 8" Angle Head Cutter
- 8" Long Nose
- 8" Linemans
- 8" Slip Joint
- 8" Groove Joint

730341 JPS-5M | List \$179.30

SALE \$103.95

5-PC Pliers/Cutter Maintenance Set



- CrV steel (except slip joint)
- Cutting blades and teeth induction-hardened to HRC 58-62
- 8" Long Nose
- 8" Diagonal Cutter
- 8" Lineman's
- 8" Slip Joint
- 8" Bent Nose

730321 JPS-5 | List \$158.60

SALE \$91.95

14-PC Jumbo Handle Screwdriver Set

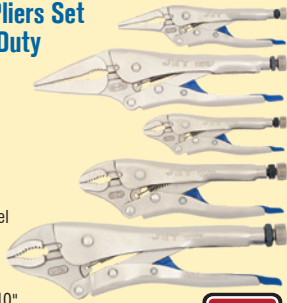


- CrV shafts
- Black-hardened magnetic tips
- Blow-mould tray

720507 JHSS-14 | List \$196.55

SALE \$113.95

5-PC Locking Pliers Set - Super Heavy Duty



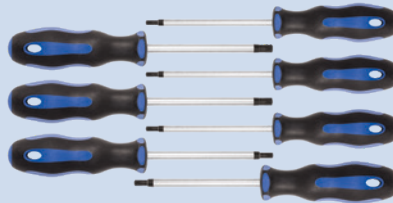
- Exclusive 9254 steel jaw components
- Reverse-action release lever
- Curved Jaw - 5, 7, 10" Long Nose - 6, 9"

730335 LPS-5 | List \$229.30

PRICE BREAK!

SALE \$126.95

7-PC Ergonomic TORX® Driver Set



- Unique handle design conforms to the hand for exceptional comfort and grip
- Patented SVCM tool steel is up to 30% stronger than CrV screwdrivers

720527 JTSD-7TS | List \$124.10

SALE \$71.95

13-PC Jumbo Handle Mechanic's Screwdriver Set

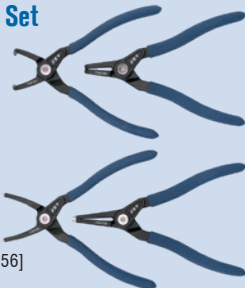


- CrV shafts
- Black-hardened magnetic tips
- Blow-mould tray

720574 JHMSS-13 | List \$186.20

SALE \$107.95

7" Snap Ring Pliers Set - Super Heavy Duty

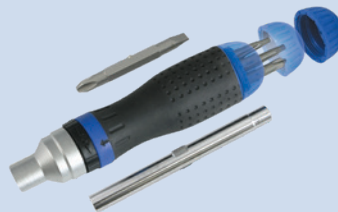


- Specially hardened SUJ2 bearing steel tips
- 7" Internal Straight [730756]
- 7" Internal Bent [730757]
- 7" External Straight [730758]
- 7" External Bent [730759]

730354 SRP-770S | List \$258.60

SALE \$149.95

19-PC Ratcheting Screwdriver Set



- 8 double-ended screwdriver bits and 3 nut drivers
- Ergonomic handle for comfort and secure grip
- Bits store in handle

720590 JRSD-19 | List \$82.70

SALE \$47.95

9-PC Cushion Grip Screwdriver Set



- Patented SVCM tool steel is up to 30% stronger than CrV screwdrivers
- Integrated cushion grips provide all day comfort and increase torque

720564 JKS-9S | List \$205.15

SALE \$118.95

5-PC Industrial Pliers Set - Super Heavy Duty

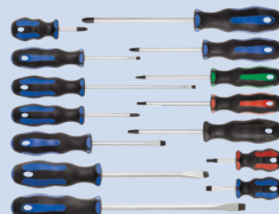


- CrV steel
- Cutting blades and teeth induction-hardened to HRC 56-65
- 8" Slip Joint Pliers
- 8" Lineman's Pliers
- 8" Long Nose Pliers
- 7-1/2" Diagonal Cutters
- 10" Groove Joint Pliers

730306 JIPS-5SHD | List \$237.90

SALE \$137.95

14-PC Ergonomic Screwdriver Set



- Unique handle design conforms to the hand for exceptional comfort and grip
- Patented SVCM tool steel is up to 30% stronger than CrV screwdrivers

720524 JTSD-14S | List \$224.10

SALE \$129.95

14-PC Cushion Grip Screwdriver Set



- Patented SVCM tool steel is up to 30% stronger than CrV screwdrivers
- Integrated cushion grips provide all day comfort and increase torque

720566 JKS-14S | List \$298.30

PRICE BREAK!

SALE \$164.95

22-PC SAE/Metric Ball Nose Hex Key Set



- CrV Steel
- 0.05 – 3/8", 1.5 – 10 mm

775164 JBHK-22SM | List \$68.90

SALE \$39.95

9-PC SAE or Metric Extra Long Ball Nose Hex Key Sets



- Hex end for extra torque
- S2 alloy steel hardened to HRC58-62

| PROD. NO. | MOD. NO. | Sizes | List | SALE |
|-----------|-----------|---------------|---------|----------------|
| 775175 | JBHK-9XL | 1/16 – 3/8" | \$65.45 | \$37.95 |
| 775185 | JBHK-9XLM | 1.5 – 10.0 mm | \$65.45 | \$37.95 |

22-PC SAE/Metric HEXTRACTOR® Hex Key Set

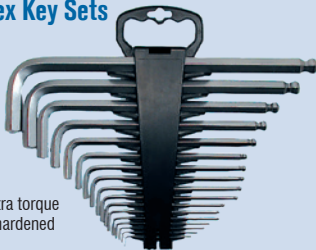


- Removes up to 85% rounded fasteners
- 0.05 – 3/8", 1.5 – 10 mm
- Safe for use on undamaged fasteners
- Heat-treated CrV steel for professional use

775123 JHHK-22 | List \$68.90

SALE \$39.95

17-PC SAE or Metric Jumbo Ball Nose Hex Key Sets



- Hex end for extra torque
- S2 alloy steel hardened to HRC58-62

| PROD. NO. | MOD. NO. | Sizes | List | SALE |
|-----------|------------|-------------|----------|-----------------|
| 775176 | JBHK-17XL | 0.05 – 3/4" | \$317.25 | \$183.95 |
| 775186 | JBHK-17XLM | 1.3 – 19 mm | \$317.25 | \$183.95 |

12-PC Deluxe Impact Driver/Extractor Set



- Premium-grade high carbon steel body
- Entirely heat-treated
- Includes patented No-Drill screw extractors

720705 JID-12S | List \$117.20

SALE \$67.95

10-PC SAE Ball Nose Hex Key Set



- CrV Steel
- 1/16 – 3/8"

775173 JBHK-10 | List \$41.30

SALE \$23.95

No-Drill Impact Driver Screw Extractor Set



- Eliminates the need to drill a hole
- Heat-treated SAE6150 CrV steel

720751 NDSE-5S | List \$46.50

SALE \$26.95

1/4" & 3/8" DR 11-PC SAE or Metric HEXTRACTOR® Hex Bit Socket Sets



- Removes up to 85% rounded fasteners
- Safe for use on undamaged fasteners
- S2 steel bit with CrV steel socket for demanding professional applications

| PROD. NO. | MOD. NO. | Sizes (1/4" Drive) | Sizes (3/8" Drive) | List | SALE |
|-----------|----------|--------------------|--------------------|---------|----------------|
| 601807 | JHBS-11S | 1/16 – 5/32" | 3/16 – 3/8" | \$94.75 | \$54.95 |
| 601809 | JHBS-11M | 1.5 – 4.5 mm | 5 – 12 mm | \$94.75 | \$54.95 |

9-PC Metric Ball Nose Hex Key Set



- CrV Steel
- 1.5 – 10 mm

775184 JBHK-9M | List \$37.85

SALE \$21.95

5-PC Screw Extractor Set



- CrMo steel
- Rockwell hardness HRC50-52

720761 | List \$68.90

SALE \$39.95

5-PC Spiral Type Screw Extractor Set



- CrMo steel
- Rockwell hardness HRC50-52

720771 | List \$40.90

SALE \$23.95

40" Fixed-Head Creeper



- Low-profile, wide-frame shoulder cut-out design provides extra comfort and freedom of movement
- Patented caster bracket distributes weight across a larger area of the frame for maximum strength and durability
- Heavy-duty 400 lb weight capacity (evenly distributed)
- Overall size (L x W x H): 40.3 x 16.7 x 4.1"

355102 JFHC-40300 | List \$147.40

SALE

\$113.95

40" Angle-Head Creeper



- Low-profile, wide-frame shoulder cut-out design provides extra comfort and freedom of movement
- Adjustable headrest with three stop positions up to 15, 30, and 45-degrees
- Patented caster bracket distributes weight across a larger area of the frame for maximum strength and durability
- Heavy-duty 400 lb weight capacity (evenly distributed)
- Overall size (L x W x H): 40.3 x 16.7 x 4.1"

355112 JAHC-40300 | List \$168.10

SALE

\$129.95

Big Wheel Creeper



- Drop-frame design allows for low ground clearance and extra-large wheels
- Sturdy, square steel-tube frame to increase strength and durability
- Heavy-duty 400 lb weight capacity (evenly distributed)
- Overall size (L x W x H): 46.2 x 23.5 x 7"

355116 JBWC-40400 | List \$232.75

SALE

\$179.95

Mechanic's Roller Seat



- Four 2.5" professional-grade polypropylene swivel casters
- Sturdy, square steel-tube frame to increase strength and durability
- Heavy-duty 330 lb weight capacity
- Overall size (L x W x H): 14.3 x 14.3 x 14.3"

355154 JMS-641A | List \$99.55

SALE

\$76.95

Deluxe High/Low Roller Seat



- Unique quick-change shop seat provides high and low seating positions with back support
- One-touch pin lock secures seat in either position and cannot be adjusted accidentally
- Super heavy-duty 330 lb weight capacity for maximum support and long service life
- Overall size (L x W x H): 22 x 15.4 x 31.2"
- Seat height: High: 19.2" / Low: 8.6"

355163 JHLS-330SHD | List \$362.10

SALE

\$279.95

4-Way Folding Creeper Seat



- Patented design quickly converts between flat creeper, high-back low seat, low-back low seat, and backless high seat with ease
- One-touch pin locks secure seat in any position and cannot be adjusted accidentally
- Overall size (L x W x H): 42.4 x 16 x 5.6"

355121 JFZC-43450SHD | List \$310.35

SALE

\$239.95

Mechanic's Roller Seat with Drawer



- Under-seat tool drawer with ball-bearing slides for convenient storage of commonly used tools
- Sturdy, square steel-tube frame to increase strength and durability
- 250 lb weight capacity
- Overall size (L x W x H): 18.3 x 13.9 x 14.3"

355155 JMS-641D | List \$125.40

SALE

\$96.95

3-Drawer Rolling Toolbox Seat



- Three ball-bearing-supported drawers with drawer liners and two fold-up trays with magnetic pads to hold small parts and tools
- Includes screwdriver rack/tool holder mounted to rear of seat
- Heavy-duty 350 lb weight capacity
- Overall size (L x W x H): 26.38 x 14.13 x 16"

355160 JTBS-3 | List \$258.65

SALE

\$199.95

Mechanic's Rolling Stool



- Hydraulic piston adjusts seat from 15.6" – 20.4"
- Five 2.5" professional-grade polypropylene swivel casters
- Heavy-duty 300 lb weight capacity
- Overall size (L x W x H): 14.5 x 14.5 x 20.4"

355157 JMS-642A | List \$125.40

SALE

\$96.95

Wide Body Mechanic's Creeper



- Made with 100% new high-density polyurethane for unparalleled strength and long life – no recycled materials
- Generous shoulder relief allows unrestricted arm movement
- 6 large double-post polyurethane casters with ball bearings provide a smooth ride over most shop floors
- Overall size (L x W x H): 47 x 23.6 x 4.75"

355131 JBMC-747 | List \$187.50

SALE

\$144.95

42" Low-Profile Blow-Mould Creeper



- Made with 100% new high-density polyethylene for unparalleled strength and long life – no recycled materials
- Extra-low profile easily fits under most vehicles
- Heavy-duty 440 lb weight capacity (evenly distributed)
- Overall size (L x W x H): 42 x 21 x 4.65"

355132 JBMC-42440 | List \$168.10

SALE

\$129.95

Double Flaring Tool Kit SAE



- Double flare adapters provided for 3/16, 1/4, 5/16, 3/8, 1/2" tubing
- Alloy steel swivel is heat-treated, ground, and chromed
- Yoke and bar is forged and tempered

H1120 | List \$153.40

SALE \$88.95

Heavy Duty Strap Filter Wrench



- Fits filters up to 9" (228 mm) diameter
- Use with 3/8" or 1/2" drive ratchet or breaker bar

H3241 | List \$113.75

SALE \$65.95

4-in-1 Ball Joint Service Kit

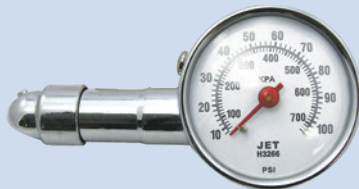


- For press-fit vehicle joint components
- For removal/installation of ball joints, universal joints, truck brake anchor pins and 4WD ball joints

H3537 | List \$586.30

SALE \$339.95

Dial-Type Tire Pressure Gauge



- Needle holds readings until released by pressing relief button
- Range: 10 – 100 PSI/KPA reading

H3266 | List \$30.95

SALE \$17.95

8-PC 3/8" Drive Triple Square Driver Bit Set



- 4, 5, 6, 8, 10, 12, 14, 16 mm
- For use on triple square bolts found on cylinder heads, axle shafts, clutches and more in European vehicles

H1458 | List \$155.15

SALE \$89.95

15-in-1 Multi-Bit Screwdriver



- 7 double-end bits give you 14 screwdriver tips
- S2 alloy steel bits Rockwell 59+/- 2HRC
- Bit load:
- Slot: F4 & F6
- Phillips: P0, P1, P2, P3
- Square: S0, S1, S2, S3
- TORX®: T10, T15, T20, T25
- End of shaft is a 1/4" hex nut driver

H3400 | List \$60.30

SALE \$34.95

Chrome Series Gauge Kits



| PROD. NO. | Description | Range | List | SALE |
|-----------|--|-------------------------------|----------|----------------|
| HTA1000 | Heavy Duty / Marine Hourmeter Gauge Kit | 0 – 99999.9 | \$151.70 | \$87.95 |
| HTA1106 | Ammeter Gauge Kit | 60-0-60+ | \$48.20 | \$27.95 |
| HTA1109 | Volt Gauge Kit | 8 – 16 V | \$82.70 | \$47.95 |
| HTA1117 | Electric Fuel Level Gauge Kit | E – F | \$155.15 | \$89.95 |
| HTA1118 | Mechanical Water Temperature Gauge Kit | 130°F – 280°F (50°C – 140°C) | \$91.30 | \$52.95 |
| HTA1125 | Wide Sweep Mechanical Water Temperature Gauge Kit | 130°F – 280°F (50°C – 140°C) | \$113.75 | \$65.95 |
| HTA1136 | Electrical Water and Oil Temperature Gauge Kit | 130°F – 280°F (50°C – 140°C) | \$113.75 | \$65.95 |
| HTA1144 | Mechanical Oil Pressure Gauge Kit | 0 – 80 PSI | \$72.35 | \$41.95 |
| HTA1150 | Wide Sweep Mechanical Oil Pressure Gauge Kit | 0 – 100 PSI | \$91.30 | \$52.95 |
| HTA1153 | Electrical Oil Pressure Gauge Kit | 0 – 100 PSI | \$120.65 | \$69.95 |
| HTA1154 | Manifold Vacuum Gauge Kit | 0 – 25 lb | \$72.35 | \$41.95 |
| HTA1156 | Mechanical Water Temperature Gauge Kit | 130°F – 280°F (50°C – 140°C) | \$118.90 | \$68.95 |
| HTA1216 | Dual Oil Pressure and Water Temperature Gauge Kit | see HTA1118, HTA1144 | \$144.80 | \$83.95 |
| HTA1308 | Triple Ammeter, Oil Pressure and Water Temperature Gauge Kit | see HTA1106, HTA1118, HTA1144 | \$172.40 | \$99.95 |
| HTA1401 | Heavy Duty/Marine Electrical Oil Pressure Gauge Kit | 0 – 100 PSI | \$172.40 | \$99.95 |
| HTA1402 | Heavy Duty/Marine Electrical Water Temperature Gauge Kit | 100°F – 280°F | \$144.80 | \$83.95 |
| HTA1403 | Heavy Duty/Marine Voltmeter Gauge Kit | 8 – 16 V | \$124.10 | \$71.95 |
| HTA1404 | Heavy Duty/Marine Fuel Level Gauge Kit | E – F | \$124.10 | \$71.95 |

2" Dial Compact Tachometers

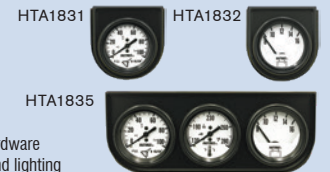
- 0 - 8000 RPM
- 270° sweep
- Illuminated



| PROD. NO. | Description | List | SALE |
|-----------|---|----------|-----------------|
| HTA1819 | White Print & Red Pointer on Black Background | \$224.10 | \$129.95 |
| HTA1820 | White Print & Red Pointer on Black Background | \$246.50 | \$142.95 |
| HTA1830 | Easy Read Black Print & Pointer on White Background | \$246.50 | \$142.95 |

Easy-Read Gauge Kits

- Kits include:
- Adaptors
 - Installation hardware
 - Instructions and lighting



| PROD. NO. | Description | List | SALE |
|-----------|--|----------|-----------------|
| HTA1831 | Mechanical Oil Pressure | \$82.70 | \$47.95 |
| HTA1832 | Ammeter | \$51.65 | \$29.95 |
| HTA1833 | Voltmeter | \$94.75 | \$54.95 |
| HTA1834 | Mechanical Water Temperature | \$101.65 | \$58.95 |
| HTA1835 | Triple Voltmeter, Water Temperature & Oil Pressure | \$206.85 | \$119.95 |

Digital Calipers



- All-metal body for improved durability
- Four measurements – inside, outside, step, and depth
- Resolution 0.0005" / 0.01 mm
- Extra-large LCD screen

| PROD. NO. | MOD. NO. | Range | List | SALE |
|-----------|----------|------------------|----------|-----------------|
| 310131 | JEDC-6 | 0 – 6" (150 mm) | \$120.65 | \$69.95 |
| 310132 | JEDC-8 | 0 – 8" (200 mm) | \$189.65 | \$109.95 |
| 310136 | JEDC-12 | 0 – 12" (300 mm) | \$265.50 | \$153.95 |

6" Fractional Digital Caliper



- All-metal body for improved durability
- Four measurements – inside, outside, step, and depth
- SAE, Metric and Fractional display
- Resolution 0.0005" / 1/64" / 0.01 mm

310133 JEDC-6F | List \$148.25

SALE **\$85.95**

5" Digital Rotor Gauge



- Range 0 – 5" (0 – 125 mm)
- Increments 0.0005" / 0.01 mm
- Stainless steel

310602 JERG-1 | List \$500.05

SALE **\$289.95**

100 Amp Analogue Load Tester



- Tests 6 and 12 volt batteries up to 1,000 CCA
- Load capacity: 100AMP

H3432 | List \$120.65

SALE **\$69.95**

4" Digital Rotor Gauge - Wheel Stays On

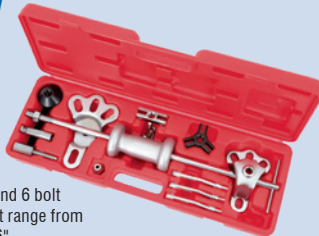


- For measuring disc brake rotor thickness without taking off the wheels
- Range 0 – 100 mm
- Stainless steel

310603 JERG-1WO | List \$827.75

SALE **\$479.95**

Slide Hammer Multi-Purpose Puller Kit - Heavy Duty



- Applies to 4.5 and 6 bolt stud circles that range from 4-1/4" to 5-9/16"
- Length: 23"
- Slide hammer: 5 lbs (2.32 kg)

H3560 | List \$569.05

SALE **\$329.95**

Digital Automotive Multimeter

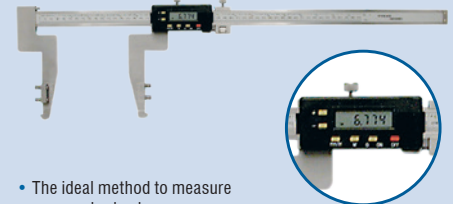


- Performs complete tune-up and troubleshooting tests on all vehicles.
- Easy-to-read digital LCD
- Data hold function
- Computer safe

H3630 | List \$379.35

SALE **\$219.95**

20" Digital Drum Gauge



- The ideal method to measure wear on brake drums
- Range 0 – 20" (500 mm)
- Increments 0.0005" / 0.01 mm
- Stainless steel

310604 JEDG-1 | List \$1,207.15

SALE **\$699.95**

14-PC Cap-Style Filter Wrench Set



- Specifically designed for 1- or 2-step models
- Heat-treated steel, black oxide finish to prevent corrosion
- Use with 3/8" square drive ratchet

H3370 | List \$241.35

SALE **\$139.95**

Digital Battery Load Tester / Charging System Analyzer



- Test 12 volt batteries up to 1,000 CCA
- Load capacity: 100 AMP

H3650 | List \$125.80

SALE **\$72.95**

17" Digital Drum Gauge - Wheels Stays On

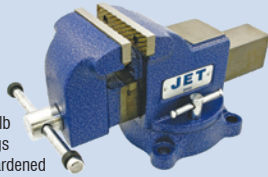


- For measuring wear on brake drums without taking the wheels off
- Range 0 – 17", 0 – 430 mm
- Increments 0.0005" / 0.01 mm
- Stainless steel

310605 JEDG-1WO | List \$1,379.60

SALE **\$799.95**

Swivel Base Vise - Heavy Duty



- Class 30 iron, 30,000-lb tensile strength castings
- Precision-machined hardened steel jaws (replaceable)
- Built-in pipe jaws
- 360° swivel base with dual lock-down handles

| PROD. NO. | MOD. NO. | Max. Opening | List | SALE |
|-----------|----------|--------------|----------|-----------------|
| 320151 | JSV-4HD | 4" | \$187.50 | \$144.95 |
| 320152 | JSV-5HD | 5" | \$245.70 | \$189.95 |
| 320153 | JSV-6HD | 6" | \$336.25 | \$259.95 |
| 320154 | JSV-8HD | 8" | \$465.60 | \$359.95 |

British Pattern Bench Vise - Heavy Duty



- Proven British-pattern design is perfect for most industrial applications
- Exclusive integrated anvil provides extra work area for added versatility
- Heavy-duty 30,000 psi ductile iron casting provides excellent strength and high-clamping pressures

| PROD. NO. | MOD. NO. | Max. Opening | List | SALE |
|-----------|----------|--------------|----------|-----------------|
| 320332 | JBPV-4 | 4.75" | \$168.10 | \$129.95 |
| 320333 | JBPV-5 | 6.75" | \$297.45 | \$229.95 |
| 320334 | JBPV-6 | 8" | \$388.00 | \$299.95 |
| 320335 | JBPV-8 | 9" | \$491.45 | \$379.95 |

Bench Vise - Super Heavy Duty



- Super-duty 120,000 psi Austempered Ductile Iron casting for extreme applications
- Up to 50% stronger than forged steel vises
- Adjustable guide rails take up wear and maintain smooth, parallel operation

| PROD. NO. | MOD. NO. | Max. Opening | List | SALE |
|-----------|----------|--------------|----------|-----------------|
| 320503 | JADV-6 | 8" | \$594.95 | \$459.95 |

Heavy Duty Round Channel Bench Vise



- Heavy-duty 60,000 psi ductile iron casting for demanding applications
- Round channel design keeps debris out and lubrication in for long life and easy operation
- Micro-grooved hardened replaceable machinist and pipe jaws provide safe, secure grip on a variety of materials

| PROD. NO. | MOD. NO. | Max. Opening | List | SALE |
|-----------|----------|--------------|----------|-----------------|
| 320403 | JBTV-6 | 6.5" | \$478.50 | \$369.95 |

Dead Blow Sledge Hammers



- Steel skeleton encased in tough Polyurethane jacket (1 – 4 lb models)
- Fibreglass handle with Polyurethane covered striking head (6 – 12 lb models)
- TPV handle grip for superior control and comfort

| PROD. NO. | MOD. NO. | Head Weight | List | SALE |
|-----------|-----------|-------------|----------|-----------------|
| 740925 | DB-300HD | 3 lbs | \$113.75 | \$65.95 |
| 740926 | DB-400HD | 4 lbs | \$189.60 | \$109.95 |
| 740927 | DB-600HD | 6 lbs | \$506.95 | \$293.95 |
| 740928 | DB-800HD | 8 lbs | \$543.15 | \$314.95 |
| 740929 | DB-1000HD | 10 lbs | \$562.15 | \$325.95 |
| 740930 | DB-1200HD | 12 lbs | \$579.40 | \$335.95 |

Sledge Hammers - Fibreglass Handle



- Fibreglass handle
- Polymer-jacketed to prevent splintering
- PVC grips for user comfort and safety

| PROD. NO. | MOD. NO. | Head Weight | List | SALE |
|-----------|----------|-------------|----------|-----------------|
| 740532 | SH-4F | 4 lb | \$65.45 | \$37.95 |
| 740533 | SH-6F | 6 lb | \$112.00 | \$64.95 |
| 740534 | SH-8F | 8 lb | \$132.75 | \$76.95 |
| 740535 | SH-10F | 10 lb | \$141.35 | \$81.95 |
| 740536 | SH-12F | 12 lb | \$165.50 | \$95.95 |
| 740538 | SH-16F | 16 lb | \$189.60 | \$109.95 |

L-Clamps



- Tempered drop-forged sliding arm reduces clamping set up time – ideal for high-volume production work
- Nickel chrome-plated rails are heat-formed from cold-drawn profiled steel
- Standard swivel pads

| PROD. NO. | MOD. NO. | Opening | List | SALE |
|-----------|----------|---------|----------|-----------------|
| 390202 | JLRD-6 | 6" | \$96.95 | \$74.95 |
| 390204 | JLRD-8 | 8" | \$135.75 | \$104.95 |
| 390206 | JLRD-10 | 10" | \$139.65 | \$107.95 |
| 390208 | JLRD-12 | 12" | \$153.85 | \$118.95 |
| 390210 | JLRD-16 | 16" | \$181.00 | \$139.95 |
| 390212 | JLRD-20 | 20" | \$209.45 | \$161.95 |

L-Clamps - Heavy Duty



- Tempered drop-forged sliding arm reduces clamping set up time – ideal for high-volume production work
- Nickel chrome-plated rails are heat-formed from cold-drawn profiled steel
- Heavy-duty swivel pads

| PROD. NO. | MOD. NO. | Opening | List | SALE |
|-----------|----------|---------|----------|-----------------|
| 390224 | JLHD-8 | 8" | \$153.85 | \$118.95 |
| 390226 | JLHD-10 | 10" | \$181.00 | \$139.95 |
| 390228 | JLHD-12 | 12" | \$223.70 | \$172.95 |
| 390230 | JLHD-16 | 16" | \$236.65 | \$182.95 |
| 390232 | JLHD-20 | 20" | \$271.55 | \$209.95 |
| 390233 | JLHD-24 | 24" | \$297.45 | \$229.95 |

Steel Pipe Wrenches - Super Heavy Duty



- Chrome Molybdenum hook and heel jaws
- Jaws hardened to HRC 52 - 58
- Powder-coated for maximum resistance to corrosion

| PROD. NO. | MOD. NO. | Length | List | SALE |
|-----------|----------|--------|----------|-----------------|
| 710122 | PW-8 | 8" | \$40.45 | \$31.95 |
| 710123 | PW-10 | 10" | \$50.20 | \$38.95 |
| 710124 | PW-12 | 12" | \$61.40 | \$47.95 |
| 710125 | PW-14 | 14" | \$68.35 | \$52.95 |
| 710127 | PW-18 | 18" | \$100.50 | \$77.95 |
| 710130 | PW-24 | 24" | \$150.80 | \$116.95 |
| 710136 | PW-36 | 36" | \$315.65 | \$243.95 |

Steel Tape Reel



- Dual SAE and Metric scales
- 3-times faster rewind mechanism, provided by fold-away handle
- Rubber moulding to provide better grip and help absorb shock if dropped
- 0-point inside ring
- 1/2" wide, 100' long steel tape
- Meets MID III (Measuring Instruments Directive) Standards

775937 JFTM-100 | List \$49.95

SALE \$28.95

165' Fibreglass SAE/Metric Tape Reel



- Two-sided tape features SAE measurements on one side, Metric on the other
- Fold-away handle provides 4-times rewind speed
- 0-point inside ring
- High-contrast blade for easy reading
- Fibreglass tape resists moisture, mildew, rot, and is ideal for outdoor use

775912 JFTM-165SM | List \$77.50

SALE \$44.95

SAE/Metric or SAE Tape Measures

- Magnetic hook sticks to steel studs and pipe for easy one-hand use
- Tape is marked every 16" and 19.2" for easy stud measurements
- Nylon-coated, nickel-plated blade resists corrosion
- High-contrast blade for easy reading
- Dual SAE and Metric scales (775923: SAE only)

| PROD. NO. | MOD. NO. | Length | Scale | List | SALE |
|-----------|-----------|------------|------------|---------|----------------|
| 775922 | JTM-316SM | 3/4" x 16' | SAE/Metric | \$22.35 | \$12.95 |
| 775923 | JTM-425S | 1" x 25' | SAE | \$32.70 | \$18.95 |
| 775924 | JTM-425SM | 1" x 25' | SAE/Metric | \$32.70 | \$18.95 |
| 775930 | JTM-33SM | 1" x 33' | SAE/Metric | \$34.40 | \$19.95 |



Aluminum Pipe Wrench - Super Heavy Duty



- Chrome Molybdenum hook and heel jaws
- Jaws hardened to HRC 52 - 58
- Powder-coated for maximum resistance to corrosion

| PROD. NO. | MOD. NO. | Length | List | SALE |
|-----------|----------|--------|----------|-----------------|
| 710225 | PWA-14 | 14" | \$108.85 | \$84.95 |
| 710227 | PWA-18 | 18" | \$138.25 | \$106.95 |
| 710230 | PWA-24 | 24" | \$213.70 | \$164.95 |
| 710236 | PWA-36 | 36" | \$419.05 | \$323.95 |
| 710239 | PWA-48 | 48" | \$656.50 | \$499.95 |

24" or 48" I-Beam Levels



- Heavy-duty aluminum frame
- SAE/Metric measurements on top
- V-Groove on bottom
- 360° vial set directly into its frame for high precision and durability
- High level of accuracy of 1 mm/m

| PROD. NO. | Scale | Overall Length | List | SALE |
|-----------|------------|----------------|---------|----------------|
| 776031 | SAE/Metric | 24" | \$39.60 | \$22.95 |
| 776032 | SAE/Metric | 48" | \$60.30 | \$34.95 |

16' or 25' Autolock SAE/Metric Tape Measures



- Auto-locking with release buttons located on the side and bottom
- Magnetic hook sticks to steel studs and pipe for easy one-hand use
- Tape is marked every 16" and 19.2" for easy stud measurements
- Dual SAE and Metric scales

| PROD. NO. | MOD. NO. | Length | List | SALE |
|-----------|------------|------------|---------|----------------|
| 775971 | JLTM-316SM | 3/4" x 16' | \$30.95 | \$17.95 |
| 775979 | JLTM-425SM | 1" x 25' | \$37.85 | \$21.95 |

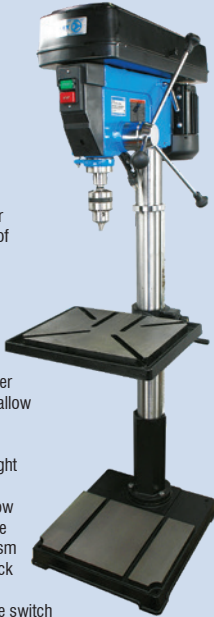
24", 48" or 72" Box Levels



- Box beam construction with reinforcing ribs prevents twisting and bending under normal use
- Precision-milled on both surfaces for maximum accuracy
- 3 shatter-resistant acrylic block vials read horizontal, plumb and 45°
- Top-read centre vial provides 300° viewing for easy readability

| PROD. NO. | MOD. NO. | Overall Length | Vials | List | SALE |
|-----------|-----------|----------------|-------|----------|----------------|
| 776001 | JBL-9924B | 24" | 3 | \$51.65 | \$29.95 |
| 776002 | JBL-9948B | 48" | 3 | \$72.35 | \$41.95 |
| 776004 | JBL-9972B | 72" | 3 | \$103.40 | \$59.95 |

22" 1.5 HP 12-Speed Drill Press

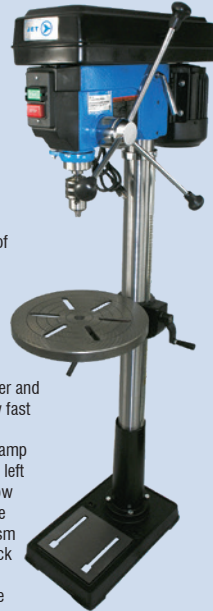


- Powerful 1.5 horsepower motor
- Full 22" swing for easy drilling of larger work pieces
- 12-speed capability allows for a broad assortment of drilling applications
- Safety on/off switch with removable lock key
- Fully hinged belt and pulley cover and quick-adjust motor mount allow fast changes of spindle speed
- Worktable with quick-release clamp rotates and tilts to 45° right and left
- Slots in worktable and base allow easy clamping of the work piece
- Positive depth-setting mechanism uses a threaded rod and two lock nuts for accuracy
- Built-in work lamp with separate switch (use outdoor rated bulb, not included)
- Standard Equipment: Drill chuck and key

200357 JDP-22F | List \$3,667.10

SALE \$2,699.00

17" 1 HP 16-Speed Floor Drill Press



- Powerful 1 horsepower motor
- Full 17" swing for easy drilling of larger work pieces
- 16-speed capability allows for a broad assortment of drilling applications
- Safety on/off switch with removable lock key
- Fully hinged belt and pulley cover and quick-adjust motor mount allow fast changes of spindle speed
- Worktable with quick-release clamp rotates and tilts to 45° right and left
- Slots in worktable and base allow easy clamping of the work piece
- Positive depth-setting mechanism uses a threaded rod and two lock nuts for accuracy
- Built-in work lamp with separate switch (bulb not included)
- Standard Equipment: Drill chuck and key

200278 JDP-17F | List \$1,902.10

SALE \$1,399.95

9" x 16" Horizontal Bandsaw



- Designed for industrial use, this saw features a heavy-duty steel and cast iron saw frame
- One-piece cast iron saw bed
- Enclosed base, welded for strength
- Precision-cast 13" blade wheels
- Coolant system includes: pump and reservoir; fully adjustable delivery nozzles at front and rear blade guides; coolant pick-up port in the drive wheel housing; quick-check gauge for coolant level
- Removable chip tray for easy cleaning
- Totally enclosed 1.5 HP fan-cooled motor with 24 volt controls
- Four-speed belt drive system
- Hydraulically controlled feed rate with micro adjust switch
- Automatic shut-off limit switch
- Blade guide system consists of ball bearing thrust roller, ball bearing blade guides and tungsten carbide slides
- Moveable left blade guide arm adjusts from 16" to 7" capacity

222335 JHBS-916 | List \$12,226.90

SALE \$8,999.00

7" x 12" Horizontal Bandsaw



- Heavy-duty cast iron construction for accuracy and durability
- Three-speed gear box replaces less efficient belt drive systems found on most comparable machines
- Horizontal cutting feed rate controlled by a fully adjustable hydraulic ram
- Coolant delivery system provides fast cutting while extending the service life of the blade and the saw
- Quiet cutting, rated within 70 decibels
- Easy cleaning with removable filter screen
- Automatic shut-off system stops the machine when the stock is cut through
- Quick-action vise adjusts from 90° to 45° for mitre cutting
- Cuts up to 7" round stock and up to 7" by 12" rectangular stock
- Full 1 HP, single-phase motor
- Complete with four wheels for mobility
- CSA Approved

222332 JHVG-712 | List \$5,514.95

SALE \$4,059.00

Bench Grinders - Heavy Duty



- Heavy-duty construction for maximum service life
- CSA electrics for safety and reliability
- All ball-bearing construction
- Steel wheel covers with rear dust exhaust ports



| PROD. NO. | MOD. NO. | Motor | List | SALE |
|-----------|----------|---------------------|----------|-----------------|
| 240153 | BGC-6 | 1/3 HP, 1 ph, 115 V | \$353.20 | \$259.95 |
| 240154 | BGC-8 | 1/2 HP, 1 ph, 115 V | \$461.90 | \$339.95 |

20 Gallon Parts Washer - Heavy Duty



- 41.8 litre working capacity
- Flexible delivery spout
- Screened inlet protects pump from foreign material

355007 JPW-20 | List \$470.70

SALE \$346.45

40 Gallon Parts Washer - Heavy Duty



- Extra-large 83 litre working capacity
- Flexible delivery spout
- Screened inlet protects pump from foreign material

355008 JPW-40 | List \$741.75

SALE \$545.95

Flo-Thru Parts Brush



- 4"-long bristles suitable for use with water-based (aqueous) cleaner, as well as petroleum-based product
- Easy attachment fitting fits most parts washers

355091 JPWB-636 | List \$50.20

SALE \$38.95

120 lb Air-Operated Grease Pump Kit - Heavy Duty



- Pumps up to 1.76 lbs per minute (27 ounces)
- Comes with 4-wheel roll-around cart

350307 JAGP-120 | List \$1,662.95

SALE \$1,199.95

18 US Gallon (68 Litre) Waste Oil Drain



- 68 litre steel recovery tank
- Adjustable bowl height from 46" to 75"
- Pressure regulator included

350512 JOIDR68GD | List \$498.85

SALE \$359.95

Lever Barrel Pump



- Suitable for use with all oil-based fluids
- Fits 15 – 55-gallon drums
- Rugged epoxy-coated pump assembly

350105 JLBP-01 | List \$123.25

SALE \$88.95

Lever Grease Gun - Heavy Duty



- A premium, heavy-duty grease gun built tough for the professional, industrial market
- Includes rigid hose
- 3-way loading capability

350152 JLGG-14HD | List \$72.70

SALE \$49.95

Pistol Grip Grease Gun - Heavy Duty



- Pistol grip design offers convenient one-handed operation
- Diecast head protects hardened steel plunger
- Includes 4" rigid hose & 18" flex hose

350155 JPGG-14HD | List \$98.90

SALE \$67.95

Dual-Mode Air Grease Gun with 30" flexible hose



- Continuous flow or one-shot operation
- Heavy-duty die cast aluminum head with combined bulk loader/air bleeder valve
- Precision-honed bore allows gun to operate even under extreme backpressure

350163 JDMAGG-14 | List \$277.10

SALE \$199.95

KLP Series Lever Chain Hoists - Heavy Duty



- Industrial grade
- Grade 100 load chain
- Cast steel safety latches exceed industry standards

| PROD. NO. | MOD. NO. | Rated Lifting Capacity | List | SALE |
|-----------|----------|------------------------|----------|-----------------|
| 110803 | KLP-25-5 | 1/4 T | \$394.90 | \$284.95 |
| 110804 | KLP-50-5 | 1/2 T | \$507.15 | \$365.95 |

Hand Cable Pullers - Heavy Duty



- Heavy-duty solid steel ratchet pawl and holding dog
- 14" heavy-duty polished ratchet arm with ergonomic grip for operator comfort and ease of use
- 111225: 2 T pulling capacity, 1 T lifting capacity
- 111228: 4 T pulling capacity, 2 T lifting capacity

| PROD. NO. | MOD. NO. | Rated Lifting Capacity | List | SALE |
|-----------|-----------|------------------------|----------|-----------------|
| 111225 | JCPP-200 | 1 Ton | \$124.65 | \$89.95 |
| 111228 | JCPP-400D | 2 Ton | \$213.35 | \$153.95 |

1 Ton SUMO® Series Drum Lifting Clamp



- Designed to lift steel drums with or without lids
- Clamp uses drum edge for lifting
- Compact and lightweight
- All-steel construction

109392 SDL-100 | List \$285.40

SALE \$205.95

VBC Series Beam Clamps



- Robust, all-steel construction
- Can be adjusted to fit securely on a wide range of flange and beam widths
- Meets ANSI B30.11 specifications (certificate included)
- Tested to 125% of rated capacity

| PROD. NO. | MOD. NO. | Rated Capacity | List | SALE |
|-----------|----------|----------------|----------|-----------------|
| 120613 | VBC-1 | 2,200 lb | \$105.25 | \$75.95 |
| 120615 | VBC-2 | 4,400 lb | \$110.80 | \$79.95 |
| 120616 | VBC-3 | 6,600 lb | \$184.25 | \$132.95 |
| 120617 | VBC-5 | 11,000 lb | \$200.90 | \$144.95 |

5,500 lb-Capacity Heavy Duty Pallet Truck



- High-quality 5,500 lb-capacity
- High-tensile steel frame and one-piece "C" section forks with welded reinforcement for superior strength
- 27" x 48" forks
- Entry rollers allow easy entry and exit from pallets

190918 PT-5500 | List \$1,086.90

SALE \$799.95

1,100 lb-Capacity SLC Series Hydraulic Scissor Lift Cart



- Hydraulic table designed for lifting and lowering
- Foot pedal for easy table lifting
- Wire control for convenient operation is superior to knob control
- Large table size

190968 SLC-1100 | List \$1,461.55

SALE \$1,129.95

3/8" Drive Butterfly Impact Wrench



- Ultra-compact design for working in confined spaces such as engines and transmissions
- Produces 80 ft-lbs of maximum torque and 100 ft-lbs of loosening torque

400120 IW38BFLY | List \$256.30

SALE \$184.95

1/2" Drive Impact Wrench - Heavy Duty



- Ultra-compact design for confined workspaces
- Produces 650 ft-lbs of maximum torque in reverse

400260 | List \$353.35

SALE \$254.95

1/2" Angled Impact Wrench



- Ultra-compact design for working in confined spaces such as engines and under vehicle
- Delivers 300 ft-lbs of maximum torque in reverse

400262 IW12AHD | List \$374.10

SALE \$269.95

3/4" Drive Composite Series Impact Wrench - Super Heavy Duty



- Produces 1,250 ft-lbs of nut-wrenching torque in reverse
- "Push Through" Forward/Reverse control conveniently allows one-hand directional change
- Weighs only 7.74 lbs

400340 AW19CSDP | List \$923.45

SALE \$634.95

3/4" Drive Impact Wrench - Heavy Duty



- Produces 1,200 ft-lbs of maximum torque in reverse
- Ultra-compact design for working in confined spaces

400360 IW34HDA | List \$764.95

SALE \$551.95

1" Drive Impact Wrench - Super Heavy Duty



- Produces 2,200 lbs of torque in reverse for the toughest applications
- Durable design for handling the toughest jobs

400449 IW1SHD1 | List \$1,240.30

SALE \$894.95

3/8" Drive Ratchet Wrench



- Improved ratchet head assembly and motor design results in powerful torque output
- Fast 150 RPM head
- Maximum torque: 50 ft-lbs

400108 RW375X | List \$160.05

SALE \$109.95

1/2" Drive Ratchet Wrench



- Improved ratchet head assembly and motor design results in powerful torque output
- Maximum torque: 50 ft-lbs

400213 RW500X | List \$170.25

SALE \$116.95

Tire Buffer w/Exhaust Hose



- Designed for tire repairs and cleaning
- Includes exhaust hose to eject particles away from the work area and the user
- 2,500 RPM motor reduces heat and friction

403162 ATB716E | List \$198.10

SALE \$142.95

Retractable Air/Water Hose Reels - Heavy Duty



- Superior heavy-gauge steel for professional applications/installations
- All metal parts powder coated for corrosion-free performance
- Reinforced L-shaped base
- Professional super-duty spring mechanism for long life

| PROD. NO. | MOD. NO. | Hose Length | List | SALE |
|-----------|----------|-------------|----------|-----------------|
| 391721 | AW3825 | 3/8" x 25' | \$509.45 | \$349.95 |
| 391722 | AW3850 | 3/8" x 50' | \$640.45 | \$439.95 |
| 391726 | AW1250 | 1/2" x 50' | \$858.80 | \$589.95 |

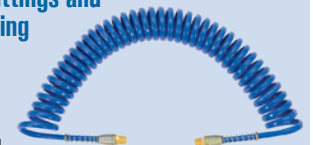
3/8" or 1/2" Hybrid Air Hoses



- Polymer construction for the heaviest-duty applications
- UV, ozone, and chemical resistance for longevity
- 300 PSI max working pressure, 1,200 PSI burst pressure
- Temperature range: -40°C (-40°F) to +82°C (180°F)

| PROD. NO. | MOD. NO. | Hose Length | List | SALE |
|-----------|----------|-------------|----------|-----------------|
| 408193 | AH3825HY | 3/8" x 25' | \$65.05 | \$46.95 |
| 408194 | AH3850HY | 3/8" x 50' | \$97.65 | \$70.95 |
| 408195 | AH1225HY | 1/2" x 25' | \$81.35 | \$58.95 |
| 408196 | AH1250HY | 1/2" x 50' | \$146.50 | \$105.95 |

1/4" or 3/8" Recoil Air Hose with Swivel Male Fittings and Protective Spring



- Light, versatile, easy to handle and difficult to kink polyurethane braid construction
- Permanent crimped male swivel brass fittings provide greater strength and pull-out resistance
- 90 – 200 PSI (working), 400 PSI (burst)

| PROD. NO. | MOD. NO. | Hose Length | List | SALE |
|-----------|-----------|-------------|---------|----------------|
| 408123 | APUB-1425 | 1/4" x 25' | \$64.10 | \$46.95 |
| 408128 | APUB-3825 | 3/8" x 25' | \$97.70 | \$70.95 |

3/8" Variable Speed Air Drills (Keyed or Keyless Chuck)



- Double-reduction planetary gear system gives low speed and high torque for heavier drilling jobs

| PROD. NO. | MOD. NO. | Chuck | List | SALE |
|-----------|----------|---------|----------|-----------------|
| 404433 | AD38VSRK | Keyed | \$231.35 | \$166.95 |
| 404434 | AD38VSR | Keyless | \$242.45 | \$174.95 |

1/2" Variable Speed Air Drills (Keyed or Keyless Chuck)



- Double-reduction planetary gear system gives low speed and high torque for heavier drilling jobs

| PROD. NO. | MOD. NO. | Chuck | List | SALE |
|-----------|----------|---------|----------|-----------------|
| 404443 | AD12VSRK | Keyed | \$360.25 | \$259.95 |
| 404444 | AD12VSR | Keyless | \$375.50 | \$270.95 |

1/4" Pistol Grip Hex Reversible Screwdriver



- Variable speed reversible screwdriver with externally adjusted clutch
- Variable speed dial and feather trigger improves speed control
- Variable clutch settings provide the user with the flexibility to perform most fastening applications

404608 PSD14HEC | List \$288.20

SALE \$207.95

.401 Shank Medium Barrel Air Hammer



- Medium barrel delivers steady, powerful blows
- Accepts popular .401 taper shank chisels

404123 AH150M | List \$108.00

SALE \$77.95

Straight Type Flux Chipper - Heavy Duty



- A powerful heavy-duty industrial flux chipper
- Lightweight compact design allows maximum operator control and access to jobs in hard-to-reach areas
- Lever throttle control

404203 FC250 | List \$425.40

SALE \$306.95

6-PC Air Hammer Kit - SHD



- Compact design for confined work spaces
- Feather trigger for precise speed control
- Comes complete with 5 chisel bits, quick-change retainer, and blow-mould case

404136 AH200SHD | List \$375.50

SALE \$270.95

.3 HP 1/4" Mini Die Grinder



- Rear exhaust
- Positive speed control
- 25,000 RPM

402109 MDG1 | List \$123.25

SALE \$88.95

.3 HP 1/4" Mini 90° Angle Head Die Grinder



- Front exhaust
- Positive speed control
- 18,000 RPM

402110 MDG90 | List \$137.15

SALE \$98.95

.6 HP 1/4" 90° Angle Head Die Grinder - Heavy Duty



- Rear exhaust, compact motor housing
- New improved drive gear system for longer life in heavy applications

402113 MG90HD | List \$374.10

SALE \$269.95

1/4" Mini Die Grinder .6 HP - Heavy Duty



- Powerful .6 HP motor – our most popular die grinder
- Front exhaust, compact motor housing – only 5-3/4" long!

402114 MG1HD | List \$187.00

SALE \$134.95

1/4" Die Grinder .9 HP - Quiet Series



- Powerful .9 HP motor for heavy-duty cutting/grinding applications
- Low noise level (82 dBA) for operator comfort
- Front and back ball bearings and motor end plates for increased life and durability

402223 MG19QS | List \$346.40

SALE \$249.95

3" Cut-Off Tool - Heavy Duty



- Powerful .6 horsepower motor
- Rear exhaust, compact motor housing
- Premium motor cylinder and 6-vane motor design for improved performance and life

409015 CO3HD | List \$260.45

SALE \$187.95

10-PC 1/2" DR Torque Limiting Impact Socket Set

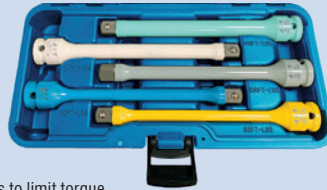


- Prevents damage due to inaccurate torque
- Contains one of each: 17 mm x 45 ft-lbs, 17 mm x 80 ft-lbs, 19 mm (3/4") x 65 ft-lbs, 19 mm (3/4") x 80 ft-lbs, 19 mm (3/4") x 100 ft-lbs, 21 mm x 80 ft-lbs, 13/16" x 100 ft-lbs, 7/8" x 120 ft-lbs, 7/8" x 140 ft-lbs, 15/16" x 135 ft-lbs

682960 JTLS-1210S | List \$506.50

SALE \$293.95

5-PC 1/2" DR Torque Limiting Impact Extension Set



- Flexes to limit torque
- CrMo Steel
- Contains one of each: 65 ft-lbs, 80 ft-lbs, 100 ft-lbs, 120 ft-lbs, 140 ft-lbs

682961 JTLE-5S | List \$202.55

SALE \$117.95

10-PC 1/2" DR Torque Limiting Impact Extension Set



- Prevents damage due to inaccurate torque
- Contains one of each: 65 ft-lbs, 75 ft-lbs, 80 ft-lbs, 90 ft-lbs, 100 ft-lbs, 110 ft-lbs, 120 ft-lbs, 140 ft-lbs, 150 ft-lbs, 160 ft-lbs

682962 | List \$405.20

SALE \$234.95

Dual-Head Tire Gauge



- Dual offset head
- Extra heavy-duty for rugged use
- Permanently etched steel indicator bar
- 10 – 200 PSI / 1 – 14 kg/cm² range

H1503 | List \$82.70

SALE \$47.95

10-PC 1/2" Dr Twist Impact Socket Set



- Removes up to 85% rounded fasteners
- Dual-rated for SAE and Metric applications
- Heat-treated CrMo steel

610392 PST-1012 | List \$262.05

SALE \$149.95

7-PC Impact Accessory Kit



- CrMo steel
- 3/8" + 1/2" Drive

610903 PSA3812-7 | List \$182.30

SALE \$104.95

Air Line Inflator With Tire Gauge - Dial Type



- 3-in-1 tool, air line inflator & deflator with tire pressure gauge
- Heavy-duty construction provides long service life

H3284 | List \$327.60

SALE \$189.95

1/2" DR Impact Flip Socket - 6 Point



- CrMo steel
- Extra-thin walls allows access to all recessed lugnuts where clearance is limited

| PROD. NO. | Size | List | SALE |
|-----------|------------------|---------|----------------|
| 682938 | 3/4 x 13/16" hex | \$26.90 | \$15.95 |
| 682939 | 19 x 21 mm hex | \$26.90 | \$15.95 |

9-3/4" Wheel Weight Pliers



- Removes and installs all types of clip-on wheel weights
- Spring-loaded handle keeps jaws in open position
- Built-in cutter to cut wheel weights

H1116 | List \$79.25

SALE \$45.95

1/2" Drive Impact Wrench - Heavy Duty



- Produces 550 ft-lbs of hard-hitting torque
- Weighs only 5.7 lbs
- Twin hammer mechanism provides more power and smooth, balanced impact blows for reduced vibration

400252 AW50AT | List \$237.20

SALE \$99.95

1" Drive D-Handle Impact Wrench - 6" Extended Anvil



- Produces 1,900 ft-lbs of hard-hitting torque
- Rocking dog hammer mechanism for power and durability
- 6" extended anvil to access lug nuts in truck and tractor wheels

400456 AW25AD6 | List \$801.75

SALE \$549.95

1" Drive Impact Wrench - Super Heavy Duty - 6" Extended Anvil



- Produces 2,200 lbs of torque in reverse for the toughest applications
- Durable design for handling the toughest jobs

400450 IW1SHD6 | List \$1,268.00

SALE \$799.95

22 Ton Air/Hydraulic Truck Jack (727A)

- Designed for heavy-duty truck and trailer shop use
- High-speed air motor design advances ram to load faster, for quick and more efficient operation
- Narrow chassis design fits easily between tandem wheels
- Fully welded hydraulic pump and cylinder construction

030670 727A | List \$1,025.45



SALE \$699.95

22 Ton Air/Hydraulic Truck Jack (728D)

- Designed for heavy-duty truck and trailer shop use
- Fully welded hydraulic pump and cylinder construction
- High-speed air motor design advances ram to load faster

030645 728D | List \$1,621.40



SALE \$999.95

22 Ton Air/Hydraulic Truck Jack - Super Heavy Duty



- Super heavy-duty, single-stage 22 ton jack built for a wide variety of demands from the heavy-duty trucking, agricultural, fleet, construction, and military sectors
- The piston head seal design is borrowed from industrial technology, providing a superior low- and high-pressure seal, giving this jack a much better hold under severe load conditions

030450 722SHD | List \$2,110.75



SALE \$1,449.95

22 Ton Safety Stand Pin Type - Sold in Pairs

- Used and sold in pairs for supporting trucks, trailers, and equipment
- Large 10"x 10" base for maximum stability
- Multiple pin holes allow adjustment to desired height
- Fully steel construction for maximum durability

032220 868 | List \$457.25



SALE \$299.95

Ratcheting-Style Jack Stands - 3, 6, or 12 Ton

- Used and sold in pairs for supporting automotive vehicles after lifting
- Ductile iron support column with ratchet teeth provides multiple height positions
- Double-locks mechanism with both handle locks and mobility pin for increased safety



| PROD. NO. | MOD. NO. | Low Height | High Height | List | SALE |
|-----------|----------|------------|-------------|----------|-----------------|
| 032242 | 853B | 11" | 16" | \$103.85 | \$74.95 |
| 032244 | 856B | 15-1/2" | 24" | \$166.25 | \$119.95 |
| 032248 | 872C | 19-1/4" | 28-1/3" | \$443.40 | \$319.95 |

10 Ton Jack Stands - Low Profile

- Used and sold in pairs for supporting trucks, trailers, and equipment
- Pin-type support column adjusts to a variety of height positions
- Height-adjustment pin is attached to the standby cable to prevent it being lost
- Large saddle with locating lugs to help support and centre the load



| PROD. NO. | MOD. NO. | Low Height | High Height | List | SALE |
|-----------|----------|------------|-------------|----------|-----------------|
| 032218 | 866A | 11-1/8" | 17-1/3" | \$429.55 | \$309.95 |
| 032228 | 873A | 20-1/2" | 30" | \$720.60 | \$519.95 |
| 032226 | 871A | 30-3/4" | 46-1/4" | \$817.60 | \$589.95 |

2 Ton 2xP Low Profile Floor Jack

- Low Profile - 75 mm (2.95")
- 2xP - Double-pump design for fast, efficient lifting
- Superior-grade "soft" components for better performance in increased jack life

030404 962DL | List \$487.60



SALE \$309.95

2 Ton Long Chassis Floor Jack - SHD



- Ultra-low height at 2-11/16" is ideal for servicing sports cars and other low-rise vehicles
- 18" throw allows the jack to reach all lift points under a vehicle
- Lightning™ hydraulic lift system quickly raises the vehicle to desired lift height

030604 982LCJ | List \$706.70



SALE \$509.95

3.5 Ton Floor Jack

- Equipped with a double-pump design for fast efficient lifting
- Heavy steel construction provides strength, stability, and dependability
- Meets or exceeds 2019 ASME PASE Standards

030606 985GT0 | List \$623.55



SALE \$449.95

3.5 Ton Floor Jack - SHD



- Lightning™ hydraulic lift system quickly raises the vehicle to desired lift height
- 20.5" max. lift height provides versatility needed to lift SUVs and pick-up trucks

030607 986SHD | List \$692.85



SALE \$499.95

4 Ton 2xP Floor Jack

- 2xP - Double-pump design for fast, efficient lifting
- Superior grade "soft" components for better performance in increased jack life
- Padded handle bumper protects vehicle finish

030408 964D | List \$655.00



SALE \$449.95

4 Ton Floor Jack - SHD



- Lightning™ hydraulic lift system quickly raises the vehicle to desired lift height
- 20.5" max. lift height provides versatility needed to lift SUVs and pick-up trucks
- Heavy-gauge steel frame with upper and lower flanges withstand twisting of the jack when under load

030608 984SHD | List \$720.60



SALE \$519.95

20 Ton Air/Hydraulic Bottle Jack - Super Heavy Duty

- Built tough for the rigors of the heavy-duty trucking, agricultural, and fleet business
- Operating pressure 110 – 120 PSI
- Dual return springs for faster ram retraction
- Safety bypass system



030158 385SHD | List \$582.25

SALE

\$399.95

20 Ton Air/Hydraulic Bottle Jack - Super Heavy Duty

- Welded tank and frame for stronger performance in rough service conditions
- Super-thick 1-1/8" base provides and incredibly stable and strong lifting platform, especially on poor surfaces
- Built tough for the rigors of the heavy-duty trucking, agricultural, and fleet business
- Operating pressure 110 – 120 PSI



030159 390SHD | List \$692.85

SALE

\$499.95

20 Ton Low Profile Air/Hydraulic Bottle Jack - Super Heavy Duty

- Welded tank and frame for stronger performance in rough service conditions
- Super thick 1-1/8" base provides and incredibly stable and strong lifting platform, especially on poor surfaces
- Built tough for the rigors of the heavy-duty trucking, agricultural and fleet business
- Operating pressure 110 – 120 PSI



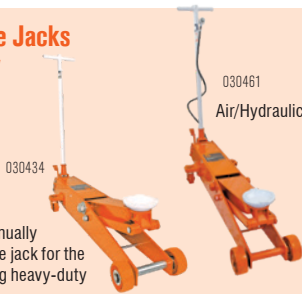
030160 391SHD | List \$651.30

SALE

\$469.95

5 Ton Service Jacks - Heavy Duty

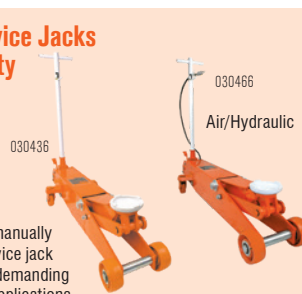
- Heavy-duty manually operated service jack for the most demanding heavy-duty applications



| PROD. NO. | MOD. NO. | Low Height | High Height | List | SALE |
|-----------|----------|------------|-------------|------------|-------------------|
| 030434 | 955 | 6" | 22.5" | \$2,017.60 | \$1,385.95 |
| 030461 | 956 | 6" | 22.5" | \$2,893.95 | \$1,987.95 |

10 Ton Service Jacks - Heavy Duty

- Heavy-duty manually operated service jack for the most demanding heavy-duty applications



| PROD. NO. | MOD. NO. | Low Height | High Height | List | SALE |
|-----------|----------|------------|-------------|------------|-------------------|
| 030436 | 957 | 7" | 23" | \$2,474.70 | \$1,699.95 |
| 030466 | 959 | 7" | 23" | \$3,490.80 | \$2,397.95 |

20 Ton Service Jacks - Super Heavy Duty

- Heavy-duty manually operated service jack for the most demanding heavy-duty applications



| PROD. NO. | MOD. NO. | Low Height | High Height | List | SALE |
|-----------|----------|------------|-------------|------------|-------------------|
| 030438 | 970SD | 7.75" | 23.75" | \$6,438.70 | \$4,422.95 |

Wheel Dolly

- Handles wheels up to 24" diameter safely and easily
- Design enables one person to do the work without lifting or straining
- 13-3/4" long rollers allow easy wheel to hub alignment



030485 624A | List \$261.85

SALE

\$188.95

1,500 lb Wheel Dolly - Heavy Duty

- For single or dual truck wheel assemblies
- Lift arm adjusts inward and outward to handle different wheel combinations
- Provides extra-low access to easily position heavy wheel assemblies
- Range: 2-1/2" – 10-1/4"



030484 224 | List \$1,375.00

SALE

\$944.95

Brake Drum Handler - Heavy Duty

- Designed for installing, removing, and transporting brake drums
- Accommodates 15" to 16-1/2" brake drums
- Rotating handle for easy lowering and raising of drum
- Design allows for easy manoeuvrability and balance of drum



030483 623 | List \$669.30

SALE

\$482.95

4 Ton Body Repair Kit

- Built with durability and value in mind
- Chrome-plated pump core and piston rod
- Double-braided hydraulic hose
- Heavy-duty blow-mould case



030203 BRK-4KT | List \$436.50

SALE

\$314.95

10 Ton Body Repair Kit

- Chrome-plated pump core and piston rod for increased durability and life
- Heavy-duty blow-mould case with wheels allows for easy storage and transport



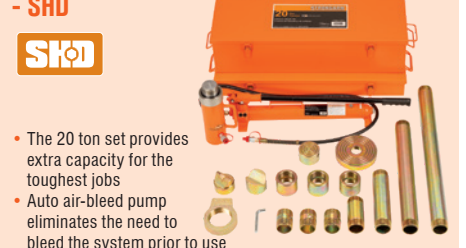
030205 BRK-10KT | List \$582.00

SALE

\$419.95

20 Ton Body Repair Kit - SHD

- The 20 ton set provides extra capacity for the toughest jobs
- Auto air-bleed pump eliminates the need to bleed the system prior to use
- Dual-piston pump for faster lifting speeds saving time and money



030256 BRK-20SHD | List \$2,771.65

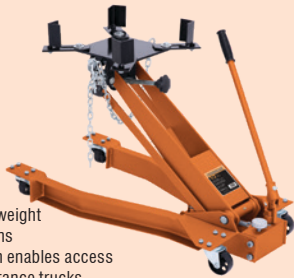
SALE

\$1,999.95

.5 Ton Low Profile Transmission Jack

- Ideal for handling light- to medium-weight truck transmissions
- Low profile design enables access to the lowest clearance trucks

030543 800B | List \$1,385.80



SALE **\$999.95**

1 Ton Low Profile Transmission Jack

- Ideal for handling medium to heavyweight truck transmissions
- Low profile design enables access to the lowest clearance trucks

030546 806B | List \$2,017.75



SALE **\$1,455.95**

2 Ton Low Profile Transmission Jack - Super Heavy Duty



- STRONGARM® offers the only super heavy-duty transmission jack with a full 2-ton-capacity
- Fully adjustable saddle with maximum tilt for easier alignment
- Low Height: 8-1/2", High Height: 34"

030549 808A | List \$4,076.00

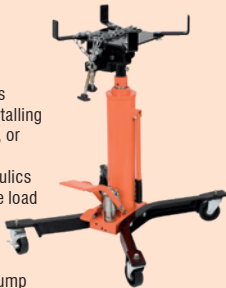


SALE **\$2,799.95**

.5 Ton High Lift Transmission Jack

- Provides service technicians one-man capabilities for installing transmissions, differentials, or transfer case
- Telescopic two-stage hydraulics for greater lift range, precise load control, and rapid lift
- Extendable height from 37" to 76-3/8"
- Convenient foot-operated pump

030535 814B | List \$1,819.60



SALE **\$1,249.95**

1 Ton High Lift Professional 2-Stage Transmission Jack

- Provides service technicians one-man capabilities for installing transmissions, differentials, or transfer case
- Telescopic two-stage hydraulics for greater lift range, precise load control, and rapid lift
- Extendable height from 37" to 76-3/8"
- Convenient foot-operated pump

030537 816B | List \$2,329.10



SALE **\$1,599.95**

Fuel Tank Adaptor - Heavy Duty

- Adjustable brackets, 2 safety straps, 2 grounding cables
- 80 lb-capacity
- Fits STRONGARM® transmission jack models 816B, 816BA, 814B and 814BA
- Overall Width: 15", Retracted Length: 19-3/4", Extended Length: 31-3/4", Pad Size: 5-3/4" x 4"

030529 818 | List \$720.55



SALE **\$519.95**

10 Ton Air End Lift Jack - Heavy Duty

- 10-ton-capacity achieved at 200 PSI air supply
- 4" x 6" steel saddles adjust between 36" and 50" widths to accommodate a wide variety of vehicle applications
- Saddle arms reversible for lower lifting points
- Three-way air valve for fine lifting and lowering control

030457 528 | List \$6,597.35



SALE **\$4,531.95**

5.5 Ton Long Reach Air Lift Jack - Heavy Duty

- Eases lifting and lowering of large truck, buses, farm, and construction equipment
- Scissor design enables flexibility when lifting
- Includes two sizes of saddles and a drop axle adapter for increased versatility
- Convenient saddle storage on the cylinder

030454 527 | List \$8,195.75



SALE **\$5,629.95**

20 Ton Truck Ramps - Super Heavy Duty



- Long retractable handle eases movement and stores easily out of the way
- Suitable for large truck tires up to 16" maximum width
- Comes with rubber non-skid pad to prevent slippage
- 20 ton-capacity per pair

030481 TR-20ATW | List \$1,819.60



SALE **\$1,249.95**

2-Stage 30/15 Ton Air/Hydraulic Truck Jack - Super Heavy Duty

- Extra lightweight and portability makes this the ideal service jack for service vehicles
- Low Height: 150 mm (5.92")
- High Height: 30 Ton - 224 mm (8.82") Lift - 74 mm (2.91")
- High Height: 15 Ton - 292 mm (11.5") Lift - 142 mm (5.59")

030474 730SHD | List \$3,057.00



SALE **\$2,099.95**

2-Stage 50/25 Ton Air/Hydraulic Truck Jack - Super Heavy Duty

- Super heavy-duty, 2-stage 50 ton and 25 ton jack built tough for the rigors of the heavy-duty trucking, agricultural, and fleet business
- Low Height: 215 mm (8.46")
- High Height: 50 Ton - 332 mm (13.07") Lift - 117 mm (4.61")
- High Height: 25 Ton - 446 mm (17.56") Lift - 231 mm (9.09")

030475 750SHD | List \$4,570.95



SALE **\$3,139.95**

3-Stage 60/40/20 Ton Air/Hydraulic Truck Jack - Super Heavy Duty

- This super heavy-duty air/hydraulic jack covers a wide variety of demands from the heavy-duty trucking, agricultural, fleet, construction, and military sectors
- Low Height: 175 mm (6.89")
- High Height: 60 Ton - 252 mm (9.92") Lift - 77 mm (3.03")
- High Height: 40 Ton - 322 mm (12.68") Lift - 147 mm (5.79")
- High Height: 20 Ton - 404 mm (15.91") Lift - 229 mm (9.02")

030476 760SHD | List \$5,274.10



SALE **\$3,622.95**

POWER-XTREME® DUO T27 Cutting and Light Grinding Wheels

TYPE 27

- Specially designed dual-purpose wheels for high-performance cutting and light grinding of both steel and stainless steel materials
- Ideal for notching, root pass cleaning, chamfering, deburring and much more



| PROD. NO. | Size | Grade | List | SALE |
|-----------|-----------------------|-----------|--------|---------------|
| 501656 | 5" x 5/64" x 7/8" | A46PX-DUO | \$5.60 | \$4.05 |
| 501671 | 4-1/2" x 3/64" x 7/8" | A60PX | \$4.50 | \$3.25 |
| 501676 | 5" x 3/64" x 7/8" | A60PX | \$4.85 | \$3.50 |
| 501681 | 6" x 3/64" x 7/8" | A60PX | \$6.70 | \$4.85 |



POWERPLUS® T1 Cut-Off Wheels

TYPE 1

- Designed for high-performance cutting of steel and stainless steel materials
- Fast and cool cutting; these wheels allow the operator to work with minimal pressure for the best control



| PROD. NO. | Size | Grade | List | SALE |
|-----------|-----------------------|--------|--------|---------------|
| 501521 | 4-1/2" x 3/64" x 7/8" | ZX60HP | \$3.50 | \$2.55 |
| 501526 | 5" x 3/64" x 7/8" | ZX60HP | \$3.65 | \$2.65 |
| 501531 | 6" x 3/64" x 7/8" | ZX60HP | \$5.20 | \$3.75 |



POWERPLUS® T27 Grinding Wheels

TYPE 27

- Specially formulated for high-performance grinding in a wide range of steel grinding operations
- Made with high-quality abrasive grains for faster grinding results with less effort



| PROD. NO. | Size | Grade | List | SALE |
|-----------|----------------------|-------|--------|---------------|
| 500418 | 4-1/2" x 1/4" x 7/8" | A24R | \$5.00 | \$3.60 |
| 500428 | 5" x 1/4" x 7/8" | A24R | \$5.35 | \$3.85 |
| 500432 | 6" x 1/4" x 7/8" | A24R | \$7.40 | \$5.35 |



POWERPLUS® T1 Cut-Off Wheels

TYPE 1

- Excellent for cutting all steel materials, offering outstanding cutting speed and long life
- Used on all electric and air die grinders as well as 3" and 4" air cut-off tools



| PROD. NO. | Size | Grade | List | SALE |
|-----------|-------------------|-------|--------|---------------|
| 501061 | 3" x 1/32" x 3/8" | A60 | \$2.95 | \$2.15 |
| 501062 | 3" x 1/16" x 3/8" | A60 | \$2.95 | \$2.15 |



POWERBLEND® TRM T29 Trimmable Zirconia Flap Discs

- Premium high-performance zirconia grain discs ensure fast, cool cutting action and extra-long life on steel and stainless steel
- Exceptional durability, POWERBLEND TRM discs outlast traditional resin fibre discs up to 25 times - saving time and money



| PROD. NO. | Size | Grade | List | SALE |
|-----------|---------------|-------|---------|---------------|
| 503413 | 4-1/2" x 7/8" | Z40 | \$11.60 | \$8.35 |
| 503415 | 4-1/2" x 7/8" | Z60 | \$11.60 | \$8.35 |
| 503417 | 4-1/2" x 7/8" | Z80 | \$11.60 | \$8.35 |
| 503419 | 4-1/2" x 7/8" | Z120 | \$11.60 | \$8.35 |
| 503423 | 5" x 7/8" | Z40 | \$13.25 | \$9.55 |
| 503425 | 5" x 7/8" | Z60 | \$13.25 | \$9.55 |
| 503427 | 5" x 7/8" | Z80 | \$13.25 | \$9.55 |
| 503429 | 5" x 7/8" | Z120 | \$13.25 | \$9.55 |



POWERBLEND® EDG Flap Discs

TYPE 27

- Folded upwards at a 90° angle to achieve optimal results in grinding fillet welds, corners, and other hard-to-reach places
- Made from specially formulated ceramic grains that are designed to stay sharp
- Fillet and corner grinding made easy



| PROD. NO. | Size | Grade | List | SALE |
|-----------|---------------|-------|---------|----------------|
| 503865 | 4-1/2" x 7/8" | CG60 | \$22.35 | \$16.15 |
| 503875 | 5" x 7/8" | CG60 | \$24.10 | \$17.40 |



JET-KUT® B & G Premium M2 H.S.S. Prentice Drill Bits



- Professional-grade M2 High Speed Steel Bits
- Bronze oxide gold lands to reduce friction for cooler cutting and longer bit life
- TORQUE DRIVE® three ground flats eliminate chuck slippage

| PROD. NO. | Size | List | SALE |
|-----------|---------|---------|----------------|
| 571233 | 33/64" | \$24.00 | \$17.30 |
| 571234 | 17/32" | \$25.00 | \$18.05 |
| 571235 | 35/64" | \$26.40 | \$19.05 |
| 571236 | 9/16" | \$27.70 | \$20.00 |
| 571237 | 37/64" | \$28.80 | \$20.80 |
| 571238 | 19/32" | \$29.95 | \$21.60 |
| 571239 | 39/64" | \$31.20 | \$22.50 |
| 571240 | 5/8" | \$32.00 | \$23.10 |
| 571241 | 41/64" | \$35.25 | \$25.45 |
| 571242 | 21/32" | \$35.10 | \$25.35 |
| 571243 | 43/64" | \$40.05 | \$28.90 |
| 571244 | 11/16" | \$38.48 | \$27.75 |
| 571245 | 45/64" | \$42.60 | \$30.75 |
| 571246 | 23/32" | \$44.20 | \$31.90 |
| 571247 | 47/64" | \$45.25 | \$32.65 |
| 571248 | 3/4" | \$43.05 | \$31.05 |
| 571249 | 49/64" | \$48.05 | \$34.65 |
| 571250 | 25/32" | \$49.65 | \$35.85 |
| 571251 | 51/64" | \$52.10 | \$37.60 |
| 571252 | 13/16" | \$49.90 | \$36.00 |
| 571256 | 7/8" | \$53.60 | \$38.70 |
| 571260 | 15/16" | \$58.50 | \$42.20 |
| 571264 | 1" | \$74.80 | \$53.95 |
| 571268 | 1-1/16" | \$84.30 | \$60.85 |

29-PC JET-KUT® Black Oxide Drill Bit Set - General Purpose (For Steel/Wood)



- 135° Split Point – Black Oxide Finish
- Available in popular 29-piece format with a strong metal index box

570108 29CD | List \$149.60

SALE \$107.95

JET-KUT® 5-PC File Set - Premium



- Set includes 1 of each:
- 10" Half Round Bastard
 - 10" Mill Bastard
 - 8" Flat Bastard
 - 8" Mill Smooth
 - 6" Slim Taper

532811 JFS-5V | List \$73.40

SALE \$52.95

29-PC JET-KUT® B & G Jobber Length Drill Bit Set - Premium Quality



- Premium 135° Split Point – black and gold finish
- Professional-grade M2 high-speed steel bits at competitive prices
- Bronze oxide gold lands to reduce friction for cooler cutting and longer bit life
- Nitro carburized black flutes for improved surface hardness ensure bit stays sharp longer

570146 BG29 | List \$163.45

SALE \$117.95

JET-KUT® 9-PC File Set - Premium



- Set includes 1 of each:
- 10" Half Round Bastard
 - 10" Mill Bastard
 - 10" Flat Bastard
 - 10" Flat Smooth
 - 10" Round Bastard
 - 8" Half Round Bastard
 - 8" Flat Bastard
 - 8" Mill Bastard
 - 6" Slim Taper

532851 JFS-9V | List \$131.60

SALE \$94.95

4-PC JET-KUT® GP Carbide Bur Set



- Designed for shaping, smoothing and material removal of hardened steel, stainless steel, cast iron, non-ferrous metals, fired ceramics, plastics, and hardwoods

534192 CBHP-4 | List \$119.10

SALE \$85.95

6-PC JET-KUT® Carbide Bur Set - Premium



- Designed for shaping, smoothing and material removal of hardened steel, stainless steel, cast iron, non-ferrous metals, fired ceramics, plastics, and hardwoods

534202 CBHP-6 | List \$149.60

SALE \$107.95

8-PC JET-KUT® Carbide Bur Set - Premium



- Designed for shaping, smoothing and material removal of hardened steel, stainless steel, cast iron, non-ferrous metals, fired ceramics, plastics, and hardwoods

534212 CBHP-8 | List \$193.95

SALE \$139.95



40-PC 1/4" Drive SAE / Metric Socket Set



- CrV steel
- 5-1/2" quick-release ratchet
- Regular and Deep: 3/16 – 1/2"
- Regular and Deep: 4 – 12 mm

020113 ISK-1440SM | List \$119.10

SALE \$85.95

20-PC 3/8" Drive SAE Socket Set



- 8" quick-release ratchet
- Regular: 3/8 – 3/4"
- Deep: 3/8 – 13/16"

020123 ISK-3820S | List \$138.50

SALE \$99.95

20-PC 3/8" Drive Metric Socket Set



- 8" quick-release ratchet
- Regular: 10 – 22 mm
- Deep: 10 – 19 mm

020124 ISK-3820M | List \$138.50

SALE \$99.95

20-PC 1/2" Drive SAE Socket Set



- 10" quick-release ratchet
- Regular: 3/8 – 1-1/4"

020133 ISK-1220S | List \$207.80

SALE \$149.95

200-PC Mechanic's Tool Set



- CrV steel
- Torque Drive sockets in 6 point, 12 point, regular and deep
- Includes 3 ratchets: 1/4", 3/8", and 1/2" drive

020304 IMTK-200 | List \$382.45

SALE \$275.95

21-PC 3/4" Drive SAE Socket Set



- 20" round head ratchet
- Regular 3/4 – 2"
- 12 point sockets
- Convenient blow-mould case

020141 ISK-3421 | List \$512.70

SALE \$369.95

13-PC 1/2" Drive SAE or Metric Impact Socket Set



- Heat-treated CrMo sockets for professional applications
- Torque-Drive® sockets apply torque to flats of fasteners to prevent corner rounding and increase torque
- Black phosphate finish resists corrosion and will not peel

| PROD. NO. | MOD. NO. | Sizes | List | SALE |
|-----------|-----------|---------------|----------|----------------|
| 020723 | IPS-1312 | 7/16 – 1-1/4" | \$109.40 | \$78.95 |
| 020731 | IPS-1312M | 10 – 24 mm | \$91.40 | \$65.95 |

13-PC 1/2" Drive Deep SAE or Metric Impact Socket Set



- Heat-treated CrMo sockets for professional applications
- Torque-Drive® sockets apply torque to flats of fasteners to prevent corner rounding and increase torque
- Black phosphate finish resists corrosion and will not peel

| PROD. NO. | MOD. NO. | Sizes | List | SALE |
|-----------|------------|---------------|----------|-----------------|
| 020728 | IPS-1312D | 7/16 – 1-1/4" | \$169.00 | \$121.95 |
| 020736 | IPS-1312DM | 10 – 24 mm | \$152.40 | \$109.95 |

14-PC SAE or Metric Polished Combination Wrench Sets



- Drop-forged, heat-treated CrV steel
- Includes roll-up pouch

| PROD. NO. | MOD. NO. | Size | List | SALE |
|-----------|----------|--------------|---------|----------------|
| 020210 | ICW-14PS | 3/8 – 1-1/4" | \$91.40 | \$65.95 |
| 020211 | ICW-14PM | 10 – 32 mm | \$91.40 | \$65.95 |

16-PC SAE or Metric Combination Wrench Sets



- Drop-forged CrV steel
- Raised panel style

| PROD. NO. | MOD. NO. | Size | List | SALE |
|-----------|----------|--------------|----------|----------------|
| 020215 | ICW-16 | 1/4 - 1-1/4" | \$127.45 | \$91.95 |
| 020216 | ICW-16M | 6 - 32 mm | \$127.45 | \$91.95 |

14-PC SAE Angle Wrench Set - 60° & 15°



- Drop-forged CrV steel
- 3/8 - 1-1/4"
- 60° & 15°

020222 IACW-14 | List \$199.50

SALE \$143.95

14-PC Ergonomic Screwdriver Set



- Chrome Vanadium steel shafts
- Comfortable ABS handles
- 3 x Phillips
- 3 x Square
- 5 x Slot
- 3 x TORX®

020907 IESD-14S | List \$74.75

SALE \$53.95

7-PC Square Extractor Set



- 1/8 - 9/16"

024207 ISE-7 | List \$109.40

SALE \$78.95

Steel Pipe Wrenches



- Forged carbon steel hook jaw
- Rockwell hardness HRC 47-52

| PROD. NO. | MOD. NO. | Length | List | SALE |
|-----------|----------|--------|----------|----------------|
| 020402 | IPW-10 | 10" | \$22.10 | \$15.95 |
| 020404 | IPW-14 | 14" | \$29.05 | \$20.95 |
| 020405 | IPW-18 | 18" | \$48.45 | \$34.95 |
| 020406 | IPW-24 | 24" | \$63.70 | \$45.95 |
| 020407 | IPW-36 | 36" | \$113.55 | \$81.95 |

Adjustable Wrenches



- Heat-treated alloy steel
- I-beam construction for increased strength
- Accurate thumb-screw for smooth operation

| PROD. NO. | MOD. NO. | Length | List | SALE |
|-----------|----------|--------|---------|----------------|
| 020311 | IAW-6 | 6" | \$15.20 | \$10.95 |
| 020312 | IAW-8 | 8" | \$17.95 | \$12.95 |
| 020313 | IAW-10 | 10" | \$26.25 | \$18.95 |
| 020314 | IAW-12 | 12" | \$27.65 | \$19.95 |
| 020315 | IAW-15 | 15" | \$51.20 | \$36.95 |

5-PC Cushion Grip Pliers Set



- Cushion-grip handles
- 8" Lineman's pliers
- 8" Long nose pliers
- 8" Diagonal cutters
- 10" Groove joint pliers
- 10" Slip joint pliers

020604 IPL-5S | List \$66.45

SALE \$47.95

13-PC Slide Hammer Puller Set



- Pulls dents, gears and axles

027405 ISHK-13 | List \$239.70

SALE \$172.95

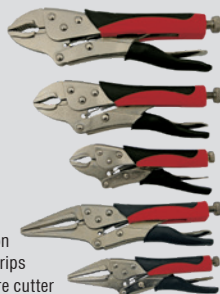
3/8" or 1/2" Drive Torque Wrenches



- Click type
- Accurate to +/- 4%
- Lock-nut to lock handle

| PROD. NO. | MOD. NO. | Drive | Torque | List | SALE |
|-----------|----------|-------|-----------------|----------|----------------|
| 021801 | ITW-2060 | 3/8" | 120 - 960 in-lb | \$105.25 | \$75.95 |
| 021811 | ITW-2063 | 1/2" | 10 - 150 ft-lb | \$124.65 | \$89.95 |

5-PC Locking Pliers Set



- Tough alloy steel construction
- Comfortable rubber handle grips
- All models complete with wire cutter

020608 ILPS-5C | List \$83.10

SALE \$59.95

60-PC SAE / Metric Tap and Die Set



- SAE and Metric combined
- Heat-treated to Rockwell C58-C61
- SAE #4 - 12, 1/4 - 1/2" NC & NF, 1/8" - 27 NPT
- Metric M3 - M12

024312 ITD-60C | List \$235.55

SALE \$169.95

10-PC Heat Gun Kit



- 120 volt, 12.5 amps
- Features dual heat settings and fan speeds
- Air Temperature:
 - Low: 375°C (700°F)
 - High: 495°C (925°F)
- Includes many accessories

011981 SPT270 | List \$71.25

SALE \$48.95



5,500 lb Hydraulic Pallet Truck



- 27" x 48" fork dimensions
- Heavy-duty pump for long life

024852 IPT-5500A | List \$970.05

SALE \$699.95

3/8" x 50' Retractable Air Hose Reel - Metal

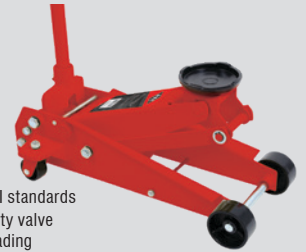


- High-grade hardened steel spring
- Max. Pressure: 300 PSI
- Corrosion-resistant powder-coat finish

028272 I3850AS | List \$360.25

SALE \$259.95

3 Ton Hydraulic Service Jack



- Conforms to ANSI standards
- Incorporates safety valve to prevent overloading
- Lifting Range: 5-1/2 - 19-1/2"

024827 ISJ-3A | List \$387.95

SALE \$279.95

4-PC Pry Bar Set



- Dual-material handles for sure grip
- Hardened and tempered CR40 steel
- 8, 12, 18 and 24"

022925 IMPB-4 | List \$74.75

SALE \$53.95

1/2 HP x 6" Bench Grinder



- Heavy-duty for professional use
- 1/2 HP 3,600 RPM motor with capacitor start
- Ball-bearing drive shafts for reduced vibration

028016 IBG-6 | List \$193.95

SALE \$139.95

3/4 HP 8" Bench Grinder



- 3/4 HP ball-bearing motor - 120 V, 4.8 Amp 60 Hz
- 5/8" Arbor
- 1" Wheel width
- 3,450 RPM (no load speed)

028017 IBG-8 | List \$256.30

SALE \$184.95

1" x 15' 1,500 lb Ratchet Tie Down Set



- Heavy-duty weather-resistant polyester web
- Rated capacity 1,500 lbs

027116 ITD-1154R | List \$62.30

SALE \$44.95

18 lb x 60" Pinched Point Crow Bar



- 18 lb x 60" x 1-3/8" shank

022937 IPB-6018 | List \$110.80

SALE \$79.95

Non-Contact Infrared Thermometer



- Allows accurate measurement of temperature without contact
- Measuring range: -20°C to 520°C / -4°F to 968°F

027591 IRT-520 | List \$180.10

SALE \$129.95

12-PC Jumbo Punch and Chisel Set



- Jumbo style for big jobs
- Vinyl pouch

023505 IPC-12 | List \$105.25

SALE \$75.95

16-PC Punch and Chisel Set



- Dual heat-treated CrV steel
- A type, shape and size for every job

023508 IPC-16 | List \$83.10

SALE \$59.95

SAE / Metric Tape Measure



- High-visibility steel tape
- Rubber shell for sure grip and resistance to impact

| PROD. NO. | MOD. NO. | Size | List | SALE |
|-----------|----------|------------|---------|---------|
| 022010 | ITM-316R | 3/4" x 16' | \$15.20 | \$10.95 |
| 022020 | ITM-425R | 1" x 25' | \$23.50 | \$16.95 |



220 Lumens - LED Headlamp



- SMD Technology
- Up to 100,000 hours lifetime
- Tilts 9 positions

849821 JLHL-220 | List \$59.45

SALE \$45.95

250 Lumens - Rechargeable SMD/COB Headlamp



- Combination SMD and COB technology for long-distance or wide-angle lighting
- Lithium-Ion battery is USB chargeable using any compatible charging block
- Cree XPG SMD provides the ultimate in long-distance lighting
- Both light sources feature Low, High, Strobe, and Variable functions

849823 JUHL-250 | List \$62.00

SALE \$47.95

250 Lumens - SMD/COB Headlamp



- Combination SMD and COB technology for long-distance or wide-angle lighting
- Cree XPG SMD provides the ultimate in long-distance lighting
- Both light sources feature Low, High, Strobe, and Variable functions
- Hold down either power button to precisely adjust light level to suit your task

849822 JLHL-250 | List \$42.60

SALE \$32.95

260 Lumens - Pivot Base COB Worklight



- Combination flashlight and worklight
- Pivoting magnetic base

849858 CPWL-260 | List \$32.25

SALE \$24.95

600 Lumens - LED Flashlight with USB Charger



- SMD Technology
- Up to 100,000 hours lifetime

849819 JLFL-600U | List \$98.25

SALE \$75.95

150 Lumens - COB Headlamp



- COB technology for wide angle and close-up work
- High, Low, and Strobe functions
- IP54 rated for outdoor use
- Sold in 6 pc POP display only

849824 JLHL-150 | List \$31.00

SALE \$23.95

320 Lumens - LED Work Light with 25' Cord



- Up to 100,000 hours lifetime
- 20 LEDs
- 25' 16/3 SJT cord for indoor use

849836 JLWL-20XL | List \$90.50

SALE \$69.95

14 Gauge Contractor Grade Extension Cords - Triple Tap



- SJTOW cord rated to -50°C
- Indoor and outdoor use
- Light indicates live power

| PROD. NO. | MOD. NO. | Length | List | SALE |
|-----------|------------|--------|----------|-----------------|
| 849881 | JLEC-1425 | 25' | \$54.25 | \$41.95 |
| 849882 | JLEC-1450 | 50' | \$93.05 | \$71.95 |
| 849884 | JLEC-14100 | 100' | \$181.00 | \$139.95 |

12 Gauge Contractor Grade Extension Cords - Triple Tap



- SJTOW cord rated to -50°C
- Indoor and outdoor use
- Light indicates live power

| PROD. NO. | MOD. NO. | Length | List | SALE |
|-----------|------------|--------|----------|-----------------|
| 849886 | JLEC-1225 | 25' | \$77.55 | \$59.95 |
| 849887 | JLEC-1250 | 50' | \$142.20 | \$109.95 |
| 849889 | JLEC-12100 | 100' | \$258.65 | \$199.95 |

14 Gauge Contractor Grade Extension Cords - Single Tap



- SJTOW cord rated to -50°C
- Indoor and outdoor use
- Light indicates live power

| PROD. NO. | MOD. NO. | Length | List | SALE |
|-----------|-------------|--------|----------|-----------------|
| 849861 | JLEC-1425S | 25' | \$50.40 | \$38.95 |
| 849862 | JLEC-1450S | 50' | \$77.55 | \$59.95 |
| 849864 | JLEC-14100S | 100' | \$168.10 | \$129.95 |

12 Gauge Contractor Grade Extension Cords - Single Tap



- SJTOW cord rated to -50°C
- Indoor and outdoor use
- Light indicates live power

| PROD. NO. | MOD. NO. | Length | List | SALE |
|-----------|-------------|--------|----------|-----------------|
| 849866 | JLEC-1225S | 25' | \$73.65 | \$56.95 |
| 849867 | JLEC-1250S | 50' | \$133.15 | \$102.95 |
| 849869 | JLEC-12100S | 100' | \$250.85 | \$193.95 |

12 Gauge ABS Cord Reel (40 ft)



- 12/3 40' SJTOW cord
- Indoor and outdoor use
- Temperature range -50°C to 60°C
- 3 grounded outlets

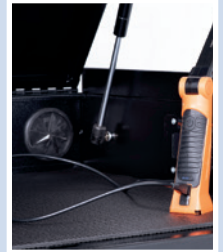
849877 JPCR-1240 | List \$284.50

SALE \$219.95



Tool Storage Common Features

- Double-wall 18 gauge steel construction with 14 gauge reinforced bottom channels
- Riveted aluminum corner mouldings
- Extra-generous 21.5" depth provides increased storage capacity
- 120 lb-capacity Soft-Close ball bearing drawer slides
- Select drawers with 2 sets of slides for maximum load capacity
- AC and USB power supply on all chests and cabinets
- USB lighting and gas struts on all top chests
- Extruded aluminum drawer pulls provide secure grip
- Drawer liners included



28" x 21" 6-Drawer Mechanic's Chest



- Lowered till height allows easy access to tools in top chest

842655 HDMC2806 | List \$1,562.45

SALE \$1,149.95

41" x 21" 4-Drawer Mechanic's Chest



- Magnetic back wall helps keep small part and tools organized and secure

842664 HDMC4104TW | List \$1,461.55

SALE \$1,129.95

52" x 21" 6-Drawer Mechanic's Chest



- Magnetic back wall helps keep small part and tools organized and secure
- Pull-out wood work surface with storage underneath

842671 HDMC5206TW | List \$2,586.90

SALE \$1,999.95

28" x 21" 7-Drawer Roller Cabinet



- EVA top mat
- Heavy-duty automotive-style casters with pedal brake

842605 HDRC2807 | List \$1,630.35

SALE \$1,199.95

41" x 21" 12-Drawer Roller Cabinet



- 1.25" wood work top
- Heavy-duty automotive-style casters with pedal brake

842615 HDRC4112 | List \$2,717.30

SALE \$1,999.95

52" x 21" 12-Drawer Roller Cabinet



- 1.25" wood work top
- Heavy-duty automotive-style casters with pedal brake

842622 HDRC5212 | List \$3,531.25

SALE \$2,599.00

72" x 24" 20-Drawer Roller Cabinet



- 1.25" wood work top
- 24" depth
- Heavy-duty automotive-style casters with pedal brake

842631 HDRC7220 | List \$5,433.40

SALE \$3,999.00

41" HD Series Toolbox Combo



- Includes 842664 and 842615 above
- Save over 16%!

842959 HD4116ST | List \$3,531.00

BUNDLE & SAVE!

SALE \$2,599.00

52" HD Series Toolbox Combo



- Includes 842671 and 842622 above
- Save over 17%!

842960 HD5218ST | List \$5,162.00

BUNDLE & SAVE!

SALE \$3,799.00



Tool Storage Common Features

- Double-wall steel construction with reinforced bottom channels
- 100 lb-capacity ball bearing slides on most drawers
- Select drawers with two sets of slides - up to 200 lb capacity
- Extruded aluminum drawer pulls provide secure grip



27" x 18" 6-Drawer Mechanic's Chest



- Includes tool tray
- 75 lb-capacity drawer slides

842553 SMC2706 | List \$733.65

SALE \$539.95

42" x 18" 10-Drawer Mechanic's Chest



- Gas shocks
- Riveted aluminum corner mouldings

842564 PMC4210 | List \$1,018.95

SALE \$749.95

56" x 24" 6-Drawer Mechanic's Chest



- Gas shocks
- Riveted aluminum corner mouldings

842574 PMC5606 | List \$1,358.65

SALE \$999.95

27" x 18" 7-Drawer Roller Cabinet



- 75 lb-capacity drawer slides

842503 SRC2707 | List \$1,018.95

SALE \$749.95

42" x 18" 11-Drawer Roller Cabinet



- 1.25" wood work surface
- Riveted aluminum corner mouldings
- AC and USB power supply

842514 PRC4211 | List \$1,494.50

SALE \$1,099.95

56" x 24" 10-Drawer Roller Cabinet



- 1.25" wood work surface
- Riveted aluminum corner mouldings
- AC and USB power supply

842524 PRC5610 | List \$2,717.30

SALE \$1,999.95

27" Pro Series Toolbox Combo



- Includes 842553 and 842503 above
- Save 15%!

842954 PRO2713ST | List \$1,493.00

BUNDLE & SAVE!

SALE \$1,099.00

42" Pro Series Toolbox Combo



- Includes 842564 and 842514 above **PLUS** 842542 Side Locker!
- Save 17% over buying separately
- While quantities last

842957 PRO4721ST | List \$2,575

BUNDLE & SAVE!

SALE \$1,895.00

56" Pro Series Toolbox Combo



- Includes 842574 and 842524 above **PLUS** 842543 Side Locker!
- Save 15% over buying separately
- While quantities last

842958 PRO5616ST | List \$3,933.00

BUNDLE & SAVE!

SALE \$2,895.00

20" Steel Hand Tool Box



- Heavy-gauge powder-coated steel for durability
- Rust-resistant plated buckles
- Pad lock or key lock

842104 TB21 | List \$96.95

SALE \$74.95

30" x 19" 4-Drawer Service Cart - Heavy Duty

- Heavy-gauge steel shell for professional use
- Ball bearing slides rated for 75 lbs/pair
- 4 drawers, large bottom shelf, and generous under-lid room provide ample storage
- Drawer slides feature positive retainer system to prevent drawers opening while moving cart
- Long tool storage racks on both sides of cart are secured when lid is locked
- Full-height plastic corner bumpers protect automobile finishes from scratches
- Automatic rear drawer lock mechanism engages when lid is closed
- Gas shocks automatically raise lid to open position and unlock all drawers
- 2 fixed and 2 swivel casters with chrome racing-style wheels
- Comfortable TPR-wrapped oval tube steel handle
- Complete with drawer liners

842916 JTC-30194 | List \$1,086.90

SALE \$799.95



26" Steel Hand Tool Box



- Heavy-gauge powder-coated steel for durability
- Rust-resistant plated buckles
- Pad lock or key lock

842105 TB26 | List \$139.65

SALE \$107.95

Jobsite Tool Storage Boxes - Super Heavy Duty



NOW with Gas Shocks

- Super heavy-duty 16-gauge steel body and lid for maximum security
- 842481 & 842482: Dual recessed lock housings prevent use of bolt cutters or blades to cut locks

| PROD. NO. | MOD. NO. | Width | Depth | Height (without Wheels) | Storage Capacity | List | SALE |
|-----------|----------|---------|-------|-------------------------|------------------------|------------|-------------------|
| 842480 | JSB-3219 | 32.125" | 19" | 17.5" | 7,776 in ³ | \$777.65 | \$569.95 |
| 842481 | JSB-4824 | 48.125" | 24" | 28.375" | 27,648 in ³ | \$1,159.15 | \$849.95 |
| 842482 | JSB-6024 | 60" | 24.2" | 28.6" | 32,364 in ³ | \$1,396.85 | \$1,079.95 |

21" 3-Drawer Steel Hand Tool Box



- Heavy-gauge powder-coated steel for durability
- Rust-resistant plated buckles
- Pad lock or key lock

842124 TB21-3 | List \$181.00

SALE \$139.95

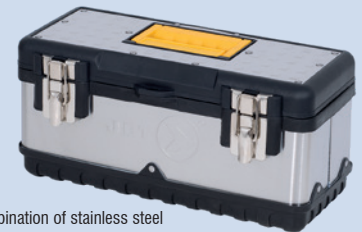
Plastic Hand Tool Boxes



- Extra-thick walls stand up to heavy loads
- Resists scratches and dents
- Removable tool tray

| PROD. NO. | MOD. NO. | Width | List | SALE |
|-----------|----------|-------|---------|----------------|
| 842142 | JPTB-16 | 16" | \$33.55 | \$25.95 |
| 842143 | JPTB-19 | 19" | \$42.60 | \$32.95 |
| 842144 | JPTB-22 | 22" | \$59.45 | \$45.95 |

Stainless Steel Hand Tool Boxes



- Combination of stainless steel and plastic components, offers great strength with low weight
- Will not rust
- Removeable tool tray

| PROD. NO. | MOD. NO. | Width | List | SALE |
|-----------|----------|-------|----------|----------------|
| 842152 | JPSTB-15 | 15" | \$54.25 | \$41.95 |
| 842153 | JPSTB-20 | 20" | \$84.00 | \$64.95 |
| 842154 | JPSTB-22 | 22.5" | \$112.45 | \$86.95 |